



IN-STOCK FLUORESCENT PRODUCTS

FOR IMMEDIATE SHIPMENT OR PICK-UP! - WWW.LALIGHTING.COM



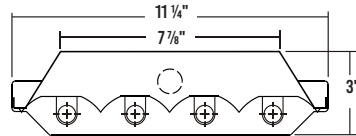
INQUIRIES: CUSTOMERSERVICE@LALIGHTING.COM / ORDERS: ORDERS@LALIGHTING.COM
PHONE: (626)454-8300 / FAX: (626)454-8399

AS OF 07/19/2021



HBN100
4-LAMP FULL BODY HIGH BAY

[VIEW DETAILS](#)

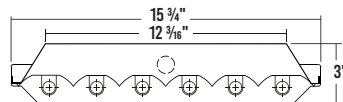


LAMPS	TYPE	CATALOG NUMBER
4	T5HO	HBN100-4-4M-SR-4E5H-UNV
CAT. NUM.		ACCESSORY DESCRIPTION
WG11-HBN100		11 GAUGE WIRE GUARD



HBN200
6-LAMP FULL BODY HIGH BAY

[VIEW DETAILS](#)

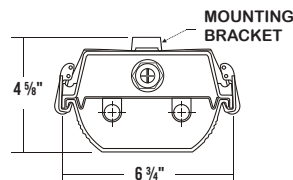


LAMPS	TYPE	CATALOG NUMBER
6	T5HO	HBN200-6-4M-SR-2/4E5H-UNV
6	T5HO	HBN200-6-4R-SR-2/4E8IH-UNV
CAT. NUM.		ACCESSORY DESCRIPTION
WG11-HBN200		11 GAUGE WIRE GUARD



CIT200
WET LOCATION VAPOR TIGHT

[VIEW DETAILS](#)

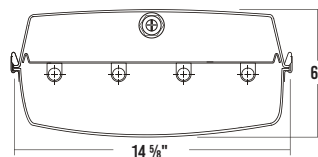


LAMPS	TYPE	CATALOG NUMBER
2	T5HO	CIT200-2-4M-DRRL-WL-2E5H-UNV
4	T5HO	CIT200-2-8MT-DRRL-WL-4E5H-UNV
CAT. NUM.		ACCESSORY DESCRIPTION
SSL		Stainless Steel Latches (2 per set)
SSL		Stainless Steel Latches (2 per set)
CIT/VH		Stainless Steel Chain Mount V-Hook*



CIT400
WET LOCATION WIDE VAPOR TIGHT

[VIEW DETAILS](#)



LAMPS	TYPE	CATALOG NUMBER
4	T5HO	CIT400-4-4M-DRCA-WL-4E5H-UNV
CAT. NUM.		ACCESSORY DESCRIPTION
SR		Specular Reflector*
CIT/VH		Stainless Steel Chain Mount V-Hook (2 per fixture)
CIT4/CM		Stainless Steel Ceiling Mount Hanger (2 per fixture)
CIT4/LT		Lens Tether* (2 per fixture)

* (FIELD INSTALLED)



Los Angeles Lighting Mfg. Co.

Headquarters
10141 Olney Street
El Monte, CA 91731
Made in the USA

Contact Us
T: 626-454-8300
F: 626-454-8399
LALighting.com

• Prices are subject to change without notice.
• All "UNV" items are with generic universal voltage ballasts (120V-277V).



IN-STOCK FLUORESCENT PRODUCTS

FOR IMMEDIATE SHIPMENT OR PICK-UP! - WWW.LALIGHTING.COM



MADE IN THE USA

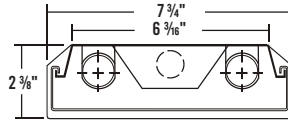
INQUIRIES: CUSTOMERSERVICE@LALIGHTING.COM / ORDERS: ORDERS@LALIGHTING.COM
PHONE: (626)454-8300 / FAX: (626)454-8399

AS OF 07/19/2021



**WAN107
ECONOMY WRAPAROUND**

[VIEW DETAILS](#)

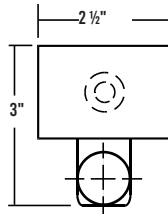


LAMPS	TYPE	CATALOG NUMBER
2	F32T8	WAN107-2-4R-2E8I-UNV
4	F32T8	WAN107-2-8RT-4E8I-UNV



**KDS100
KNOCKED DOWN STRIP - 1 LAMP**

[VIEW DETAILS](#)

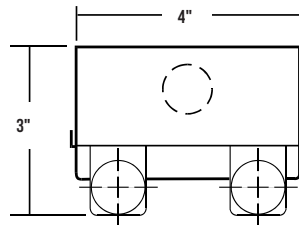


LAMPS	TYPE	CATALOG NUMBER
1	F32T8	KDS100-1-4R-1E8I-UNV
2	F32T8	KDS100-1-8RT-2E8I-UNV
CAT. NUM.		ACCESSORY DESCRIPTION
WG14-KDS100		4' - 14 Gauge Wire Guard



**KDS200
KNOCKED DOWN STRIP - 2 LAMP**

[VIEW DETAILS](#)

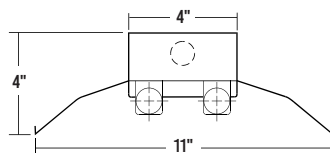


LAMPS	TYPE	CATALOG NUMBER
2	F32T8	KDS200-2-4RT-2E8I-UNV
4	F32T8	KDS200-2-8RT-4E8I-UNV
CAT. NUM.		ACCESSORY DESCRIPTION
WG14-KDS100		4' - 14 Gauge Wire Guard
CMC-KDS200		12" Coupling for KDS200



**KDI200
KNOCKED DOWN INDUSTRIAL STRIP - 2 LAMP**

[VIEW DETAILS](#)



LAMPS	TYPE	CATALOG NUMBER
2	F32T8	KDI200-2-4R-2E8I-UNV
4	F32T8	KDI200-2-8R-4E8I-UNV
CAT. NUM.		ACCESSORY DESCRIPTION
WG14-KDS100		4' - 14 Gauge Wire Guard
CMC-KDS200		12" Coupling for KDS200



Los Angeles Lighting Mfg. Co.

Headquarters
10141 Olney Street
El Monte, CA 91731
Made in the USA

Contact Us
T: 626-454-8300
F: 626-454-8399
LALighting.com

• Prices are subject to change without notice.
• All "UNV" items are with generic universal voltage ballasts (120V-277V).