



# New: Polycarbonate Lens for WSE200 and WSE201 Security Luminaires

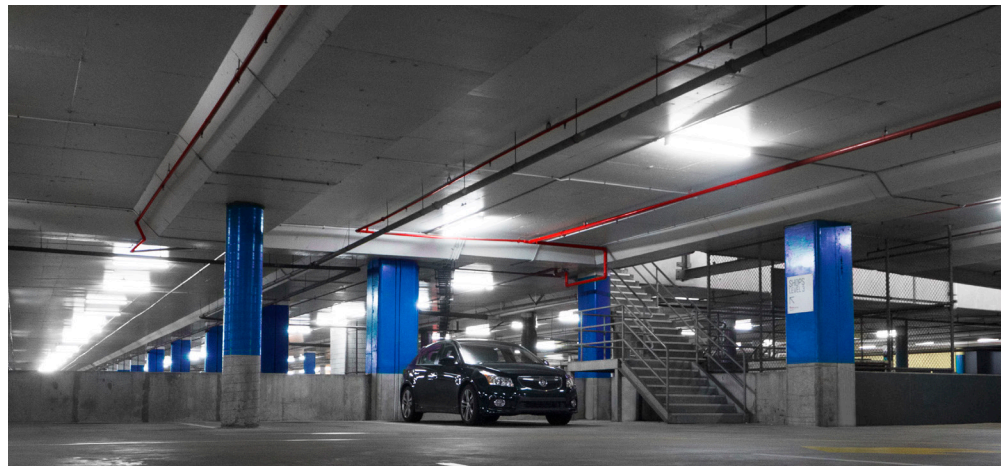


A new smooth, frosted polycarbonate lens is now available for L.A. Lighting's WSE200 and WSE201 curved wraparound luminaires. Designed for high-impact and security applications, the lens is sealed to the housing with a full neoprene gasket to keep out insects and dirt, and secured in place with durable steel lens retainers.

When combined with optional tamper-proof screws, the new polycarbonate lens transforms the WSE200 and WSE201 into durable, vandal-resistant security fixtures that can stand up to high abuse in public settings, including *parking structures, stairwells, pedestrian tunnels, and canopies*.

For additional versatility, optional 20 gauge steel construction and wet location features are also available.

Visit [www.lalighting.com](http://www.lalighting.com) or contact your Los Angeles Lighting sales rep to learn more.



WSE200



WSE201

## About the WSE200/WSE201

**Construction:** 22 gauge die-formed cold-rolled steel housing with 18 gauge end plates. Spot-welded seams and corners.

**Lengths:** 2', 3', 4', and 8' standard. Custom lengths available.

**Lens:** Smooth frosted polycarbonate. Thickness 0.10", transmission 80-85%.

**Finish:** Baked white powder coat, painted after fabrication

**Controls:** Wireless and wired controls available. WSE201 includes integral sensor.

© 2022 LOS ANGELES LIGHTING MANUFACTURING CO. ALL RIGHTS RESERVED.

Los Angeles Lighting  
Commercial & Industrial Lighting Solutions Since 1988

T: (626) 454-8300 / [www.lalighting.com](http://www.lalighting.com)