



RETROFIT KIT LED

RWCP300 [4FT]

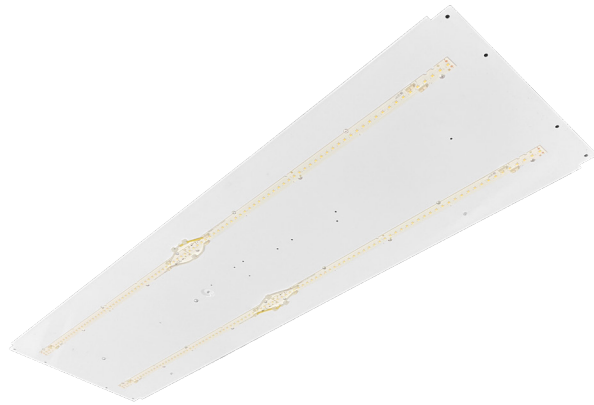
LED RETROFIT SOLUTION FOR 13 3/4" WIDE WRAPAROUND LUMINAIRES

JOB	
TYPE	
DATE	

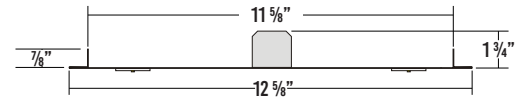
WWW.LALIGHTING.COM

TEL: 626-454-8300

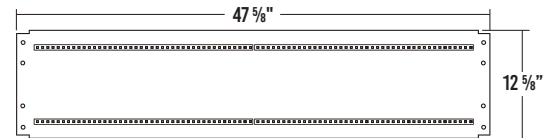
DIMENSIONS



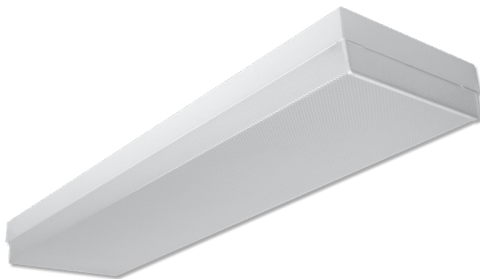
Cross Section



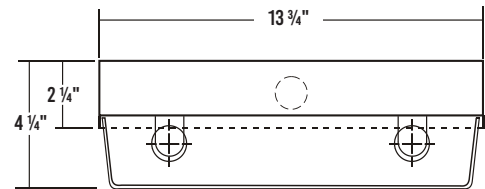
Front View



Typical Host Fixture
WCP300



Typical Host Fixture Dimensions



*Dimensions must be checked against host fixture to ensure the Retrofit solution will fit properly.
L.A. Lighting has the capability to modify the retrofit solution to fit your fixture.

SPECIFICATIONS

CONSTRUCTION

- 22 gauge cold-rolled steel LED tray
- LED tray to be secured to the host fixture with provided screws

FINISH

- Baked white polyester finish
- Minimum reflectance 86%

ELECTRICAL

- High-efficiency drivers coupled with long-life LEDs
- Service life tested at 50,000 hours (L70)
- Universal voltage 120V through 277V (347V / 480V available)
- Power Factor (PF) ≥ 0.9
- Total Harmonic Distortion (THD) ≤ 20%

LISTING

- UL USA and Canada listed / suitable for damp locations

WARRANTY

- 5-Year limited warranty standard. 10-Year limited warranty also available

APPLICATIONS

- Classrooms, Workrooms, Kitchens, Locker Rooms, Offices

FEATURES

- Safety cables for easy installation
- 0-10V Dimming driver standard
- Supports California Title 24 compliance
- Includes installation hardware, required UL labels, and instructions

OPTIONS CONTACT CUSTOMER SERVICE FOR ADDITIONAL OPTIONS

- Controls
- Painted after fabrication
- Emergency battery pack
- Tunable white (2700K-6500K)
- Additional lumen packages available
- Customization available upon request



Los Angeles Lighting Mfg. Co.
 Contact Us
 T: 626-454-8300 10141 Olney Street
 F: 626-454-8399 El Monte, CA 91731
 www.lalighting.com Made in the USA



Due to continued product improvements and enhancements, Los Angeles Lighting Manufacturing Company reserves the right to alter specifications, dimensions, data, and/or materials without notice. Please visit our website to view the most current information.

© 2022 LOS ANGELES LIGHTING MANUFACTURING CO. ALL RIGHTS RESERVED.

Revised: 09/29/2022



ORDERING INFORMATION

ADDITIONAL OPTIONS AVAILABLE. VISIT WWW.LALIGHTING.COM/RESOURCES FOR MORE INFORMATION

EXAMPLE: RWCP300-4-4L-BPL1.5-DRDM-UNV-2/840

SERIES	NOMINAL LED LUMENS	NOMINAL LENGTH	FINISH	ELECTRICAL	DRIVER	VOLTAGE	# OF LED ROWS	CRI / CCT
RWCP300		4L			DRDM	UNV	2	
RWCP300 • Retrofit Solution for 13 3/4" Wide Wraparound Luminaires	4 - 4000lm 6 - 6000lm 8 - 8000lm	4L • 4'	PAF • Painted After Fabrication *Leave blank if not specified	BPL1.5 • Emergency Battery Pack 1500 lm MSH • High Frequency Motion Sensor MSHSD • Step Dimming High Frequency Microwave Motion Sensor WLC(LED RU) • EnOcean Wireless Control *Leave blank if not specified	DRDM • 0-10V Dimming Driver	UNV • 120V - 277V 120V • 120 Volt 277V • 277 Volt 347V • 347 Volt 480V • 480 Volt	2 • Two LED Rows	830 • 80+CRI / 3000K 835 • 80+CRI / 3500K 840 • 80+CRI / 4000K 850 • 80+CRI / 5000K 8TW • 80+CRI Tunable White 2700K-6500K Contact customer service for additional CRI / CCT packages, including 90CRI
Standard options for RWCP300 shown above. For additional options, including lumen packages, controls, lenses, switches, finishes, and more, visit www.lalighting.com/resources or contact customer service.								

SYSTEM DATA

ADDITIONAL LUMEN PACKAGES AVAILABLE. CONTACT CUSTOMER SERVICE FOR MORE INFORMATION

4' - LED LUMEN PACKAGE	NORMAL AMBIENT TEMPERATURE PRODUCT CODE	DELIVERED LUMENS **	SYSTEM WATTS	LUMINAIRE EFFICACY	AMBIENT TEMP.	FLUORESCENT EQUIVALENT	IES FILES
4000 Lumens (Nominal)	RWCP300-4-4L-DRDM-UNV-2/840	3681	25.7	142.8 lm/W	-20°C / 35°C	2-F32T8, 1-F54T5HO	LA-T3875b-1.ies
6000 Lumens (Nominal)	RWCP300-6-4L-DRDM-UNV-2/840	5476	38.9	140.6 lm/W	-20°C / 35°C	3-F32T8	*
8000 Lumens (Nominal)	RWCP300-8-4L-DRDM-UNV-2/840	7229	52.6	137.2 lm/W	-20°C / 35°C	4-F32T8, 2-F54T5HO	*

NOTE:
 System data is based on 120V input voltage. Actual performance may differ as a result of end-user environment and application.
 ** As tested in a host fixture with a clear prismatic acrylic lens
 This fixture has been tested and listed in accordance with UL Standards. L.A. Lighting certifies that it will operate safely when installed properly, and within an ambient temperature range noted in the system data table.
 Additional lumen packages and color temperatures available.



Los Angeles Lighting Mfg. Co.
 Contact Us
 T: 626-454-8300 10141 Olney Street
 F: 626-454-8399 El Monte, CA 91731
www.lalighting.com Made in the USA



Due to continued product improvements and enhancements, Los Angeles Lighting Manufacturing Company reserves the right to alter specifications, dimensions, data, and/or materials without notice. Please visit our website to view the most current information.

© 2022 LOS ANGELES LIGHTING MANUFACTURING CO. ALL RIGHTS RESERVED.

Revised: 09/29/2022



MADE IN THE USA
 BAA Compliant