

# LED T8 - RECESSED

## FHL320 SERIES

### 2X2/2X4 Premium Grade Trim Flange Luminaire



- 2x2 & 2x4, Premium Grade Trim Flange Luminaire For LED T8 Light Tube (by Others)
- One Piece Welded Trim Flange Painted After Fabrication
- 20 Gauge Steel or Extruded Aluminum Door Frame Screwed At Each Corner
- Door Frame Painted After Fabrication
- T-Hinge And Spring Loaded Latch

- Available with:  
Heavy Duty Safety Switch  
Extensive Variety of Lenses



**LOS ANGELES LIGHTING MFG. CO.**

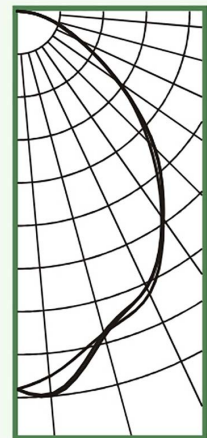
10141 OLNEY ST. / EL MONTE, CA 91731

<http://www.lalighting.com>

**TEL : 626-454-8300 FAX : 626-454-8399**

FHL320-4-4L-PA-LED8

TEST NO.=LA-T1786-1  
LAMP TYPE=LED T8, 4'  
NO. OF LAMP=4  
LUMENS PER LAMP=1300  
WATTS PER LAMP=15  
BALLAST FACTOR=1  
PHOTOMETRY TYPE=C



#### CANDLEPOWER

Angle	End	45	Cross
0	1774	1774	1774
5	1804	1722	1813
15	1562	1565	1578
25	1433	1463	1430
35	1186	1192	1178
45	908	911	869
55	569	580	580
65	324	318	314
75	170	165	162
85	47	49	52
90	4	3	3
95	0	0	0
105	0	0	0
115	0	0	0
125	0	0	0
135	0	0	0
145	0	0	0
155	0	0	0
165	0	0	0
175	0	0	0
180	0	0	0

#### ZONAL LUMEN SUMMARY

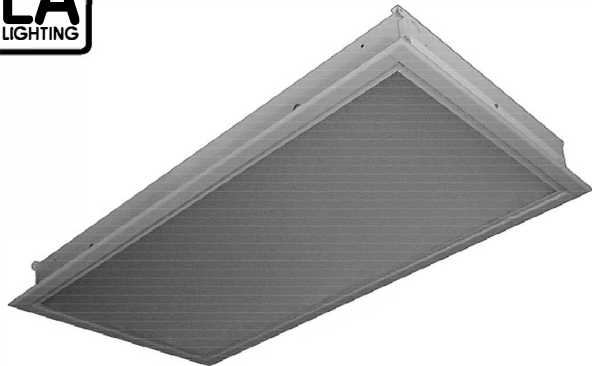
DEGREES	LUMENS	% LAMP	% FIXTURE
0-30	1283	24.7	34.0
0-40	2028	39.0	53.7
0-60	3243	62.4	85.9
0-90	3776	72.6	100.0
90-120	1	0.0	0.0
90-150	1	0.0	0.0
90-180	1	0.0	0.0
0-180	3777	72.6	100.0

Luminaire Efficiency = 72.6%

#### SPACING CRITERION

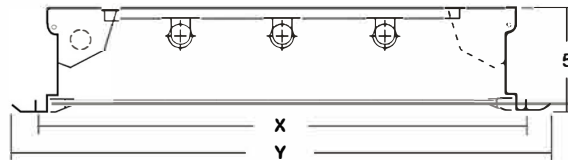
ALONG	ACROSS
1.11	1.11

**LED T8 - RECESSED**



**FHL320 SERIES - LED T8**

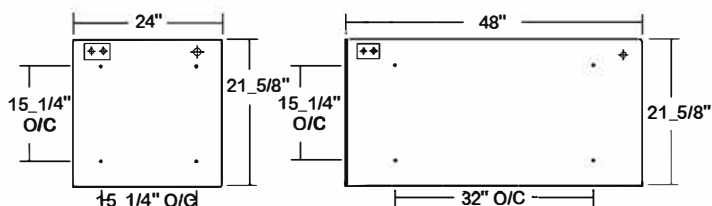
**CROSS SECTION**



**2X2-Ceiling Opening** X - 24\_1/2" x 24\_1/2"  
**Overall Width By Length** Y - 26" x 26"  
**2X4-Ceiling Opening** X - 24\_1/2" x 48\_1/2"  
**Overall Width By Length** Y - 26" x 50"

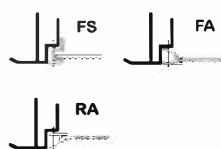
**BACK PLATE**

ACCESS PLATE 7/8" K.O. • 3/8" K.O.



**DOOR FRAME INFORMATION**

**CROSS SECTION**



**FS W**

**FINISHES**

W - White Enamel  
 B - Black Enamel  
 N - Natural Anodized Aluminum

**STYLES**

FS - Flat Steel  
 FA - Flat Extruded Aluminum  
 RA - 5/8" Regressed Extruded Aluminum

**CATALOG NUMBER**

	NOMINAL WIDTH X LENGTH	TOTAL LAMPS
FHL320-1-2LI	2' X 2'	1
FHL320-1-2LR	2' X 2'	1
FHL320-1-2LO	2' X 2'	1
FHL320-2-2LI	2' X 2'	2
FHL320-2-2LR	2' X 2'	2
FHL320-2-2LO	2' X 2'	2
FHL320-3-2LI	2' X 2'	3
FHL320-3-2LR	2' X 2'	3
FHL320-3-2LO	2' X 2'	3
FHL320-4-2LI	2' X 2'	4
FHL320-4-2LR	2' X 2'	4
FHL320-4-2LO	2' X 2'	4
FHL320-2-4LI	2' X 4'	2
FHL320-2-4LR	2' X 4'	2
FHL320-2-4LO	2' X 4'	2
FHL320-3-4LI	2' X 4'	3
FHL320-3-4LR	2' X 4'	3
FHL320-3-4LO	2' X 4'	3
FHL320-4-4LI	2' X 4'	4
FHL320-4-4LR	2' X 4'	4
FHL320-4-4LO	2' X 4'	4
FHL320-5-4LI	2' X 4'	5
FHL320-5-4LR	2' X 4'	5
FHL320-5-4LO	2' X 4'	5
FHL320-6-4LI	2' X 4'	6
FHL320-6-4LR	2' X 4'	6
FHL320-6-4LO	2' X 4'	6

**SAFETY SWITCH**

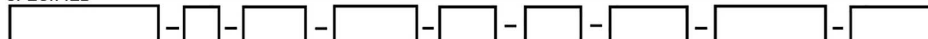
**TS2 - LED Luminaire On/Off Safety Switch**

- Easily accessible on exterior of wire way.
- Allows individual fixture to be switched ON/OFF during re-lamping or Maintenance.
- Prevents damage to lamp and electrical shock during lamping and re-lamping.
- Allows safe entry to wire way channel where power connector can be disconnected for maintenance to fixture.

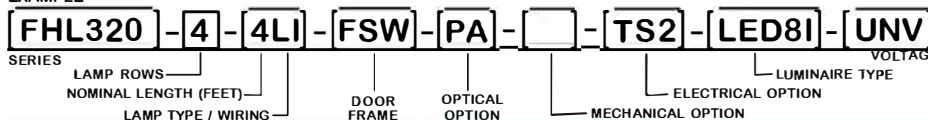


**ORDERING GUIDE**

**SPECIFIED**



**EXAMPLE**



**OPTIONS AND ACCESSORIES**

**OPTICAL OPTIONS**

- Parabolic Plastic Louvers
- Polycarbonate Lenses High Impact Acrylic
- FlatFrosted White Acrylic
- Clear Prismatic Acrylic

**SUFFIX**

- \*
- \*
- FFWA
- PA

**MECHANICAL OPTIONS**

- Gasketing

**SUFFIX**

- GSK

**ELECTRICAL OPTIONS**

- LED Luminaire ON/OFF Safety Switch

**SUFFIX**

- TS2

**ACCESSORIES**

- Hanger Yokes
- Swing Out Jack

**CAT. NO.**

- HS-24 1/2
- SOJ

\*See Appropriate Reference Page

**LAMP TYPE**

**LI = LED T8 internal driver light tube.**

Both ends powered.  
 Shunted sockets used.



**LR = LED T8 internal driver light tube.**

Single end powered.  
 Non-shunted sockets used.



**SPECIFICATIONS**

\*\* Lamp(s) by others.

- **TYPE**
- **CONSTRUCTION**
- **FINISH**
- **DOOR FRAME**
- **OPTICS**
- **WIRING**
- **LABELS**

A versatile recessed mounted flanged luminaire for LED T8 light tube (s)\*\* with internal driver.  
 22 ga. cold rolled steel housing. (20 ga. housing available as specified)  
 Baked white polyester finish, minimum reflectance 86%. (Powder coated finish available.)  
 20 gauge cold rolled steel or extruded aluminum in various finishes. T-hinge, positive spring loaded latch.  
 Clear prismatic acrylic standard. Extensive variety of lenses, diffusers and louvers available.  
 Operates T8 LED light tube(s)\*\*.  
 U.L Listed. Suitable for damp locations.

