



BAYLIGHTER® LED

PBL220 SERIES

PENDANT-MOUNTED HIGH BAY LUMINAIRE

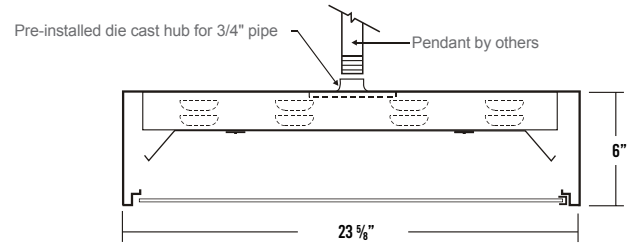
| | |
|------|--|
| JOB | |
| TYPE | |
| DATE | |

WWW.LALIGHTING.COM

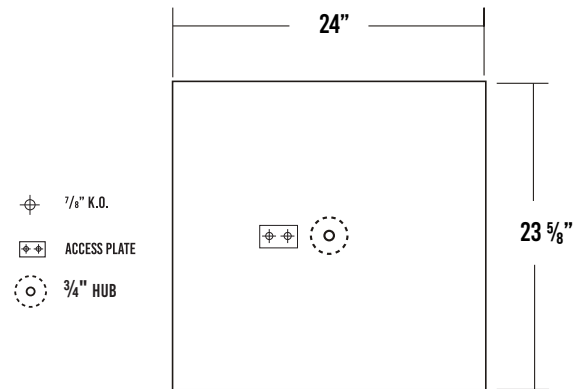
TEL: 626-454-8300

DIMENSIONS

CROSS SECTION



2' X 2' BACK PLATE



SPECIFICATIONS

CONSTRUCTION

- 20 gauge cold-rolled steel housing with louvered vents for heat removal
- 20 gauge cold-rolled steel door frame (extruded aluminum finishes available) secured by T-hinges and positive spring loaded latches
- One way polyurethane gasket standard
- Die cast center hub for 3/4" pipe

FINISH

- Baked white powder-coated finish
- Painted after fabrication
- Minimum reflectance 90%

OPTICAL

- Clear prismatic acrylic lens standard

ELECTRICAL

- High-efficiency drivers coupled with long-life LEDs
- Service life tested at 50,000 hours (L70)
- Universal voltage 120V through 277V (347V / 480V available)
- Power Factor (PF) ≥ 0.9
- Total Harmonic Distortion (THD) ≤ 20%

LISTING

- UL USA and Canada listed / suitable for damp locations

WARRANTY

- 5-Year limited warranty standard, 10-Year limited warranty available

APPLICATIONS

- Commercial, Retail, Auditorium, High Bay

FEATURES

- High (HT) ambient temperature version for extreme temperature ranges
- 0-10V Dimming driver standard
- Supports California Title 24 compliance
- Safety cables attached to door frame and LED gear tray
- Formed air slot that allows air circulation for heat removal

OPTIONS CONTACT CUSTOMER SERVICE FOR ADDITIONAL OPTIONS

- Controls
- Custom housing colors
- Emergency battery pack
- Tunable white (2700K - 6500K)
- Customization available upon request

CUSTOM COLORS

BLK - Matte Black

CS - Camaro Silver

BZ - Statuary Bronze

Variety of RAL colors available upon request.



Los Angeles Lighting Mfg. Co.
 Contact Us
 T: 626-454-8300 10141 Olney Street
 F: 626-454-8399 El Monte, CA 91731
 www.lalighting.com Made in the USA



Due to continued product improvements and enhancements, Los Angeles Lighting Manufacturing Company reserves the right to alter specifications, dimensions, data, and/or materials without notice. Please visit our website to view the most current information.

© 2022 LOS ANGELES LIGHTING MANUFACTURING CO. ALL RIGHTS RESERVED.

Revised: 10/05/2022



ORDERING INFORMATION

ADDITIONAL OPTIONS AVAILABLE. VISIT WWW.LALIGHTING.COM/RESOURCES FOR MORE INFORMATION

EXAMPLE: PBL220-16-2L-FSW-PA-BPL3.0-DRDM-UNV-2/850HT

| SERIES | NOMINAL LED LUMENS | NOMINAL LENGTH | DOOR FRAME | OPTICAL | CONTROLS | ELECTRICAL | DRIVER | VOLTAGE | # OF LED ROWS | CRI / CCT | AMBIENT TEMP. |
|---|--|----------------|---|---|--|---|---------------------------------------|---|--|--|-----------------------------------|
| PBL220 | | 2L | | | | | DRDM | UNV | | | HT |
| PBL220 • Pendant-Mounted High Bay Luminaire | 8 - 8000lm 12 - 12000lm 16 - 16000lm 20 - 20000lm 24 - 24000lm | 2L • 2' | FSW • Flat Steel White Enamel | PA • Clear Prismatic Acrylic PA2 • Clear Prismatic Acrylic Nom. 0.125 FPA2 • Frosted Prismatic Acrylic Nom. 0.125 FFWA • Flat Frosted White Acrylic Nom. 0.125 | MSH • Motion Sensor High Frequency (Microwave) MSHSD • Motion Sensor High Frequency Step Dimming (Microwave) WLC(xx) • Wireless Control *Leave blank if not specified | BPL1.5 • 1500lm Emergency Battery Pack BPL3.0 • 3000lm Emergency Battery Pack *Leave blank if not specified | DRDM • 0-10V Dimming Driver | UNV • 120V - 277V 120V • 120 Volt 277V • 277 Volt 347V • 347 Volt 480V • 480 Volt | 2 • 2 LED Rows (For 8000lm, 12000lm, and 16000lm options) 4 • 4 LED Rows (For 20000lm, and 24000lm options) | 835 • 80+CRI / 3500K 840 • 80+CRI / 4000K 850 • 80+CRI / 5000K Contact customer service for additional CRI/CCT packages | HT • High Ambient Temp. |

Standard options for PBL220 shown above. For additional options, including lumen packages, controls, lenses, switches, finishes, and more, visit www.lalighting.com/resources or contact customer service.

SYSTEM DATA

ADDITIONAL LUMEN PACKAGES AVAILABLE. CONTACT CUSTOMER SERVICE FOR MORE INFORMATION

| 2'x2' LED LUMEN PACKAGE | HIGH AMBIENT TEMPERATURE PRODUCT CODE | DELIVERED LUMENS | SYSTEM WATTS | LUMINAIRE EFFICACY | AMBIENT TEMP. | FLUORESCENT EQUIVALENT | IES FILES |
|-------------------------|---------------------------------------|------------------|--------------|--------------------|------------------------------|------------------------|---------------------------------|
| 8000 Lumens (Nominal) | PBL220-8-2L-FSW-PA-DRDM-UNV-2/850HT | 6161 | 48.3 | 127.5 lm/W | -30°C / 50°C (-22°F / 122°F) | 4-F24T5HO, 2-F54T5HO | * |
| 12000 Lumens (Nominal) | PBL220-12-2L-FSW-PA-DRDM-UNV-2/850HT | 9085 | 75.3 | 120.6 lm/W | -30°C / 50°C (-22°F / 122°F) | 6-F24T5HO, 3-F54T5HO | LA-T3563-1.ies |
| 16000 Lumens (Nominal) | PBL220-16-2L-FSW-PA-DRDM-UNV-2/850HT | 12265 | 99.5 | 123.1 lm/W | -30°C / 50°C (-22°F / 122°F) | 8-F24T5HO, 4-F54T5HO | * |
| 20000 Lumens (Nominal) | PBL220-20-2L-FSW-PA-DRDM-UNV-4/850HT | 15195 | 122.9 | 123.5 lm/W | -30°C / 50°C (-22°F / 122°F) | 5-F54T5HO | LA-T3805a-2.ies |
| 24000 Lumens (Nominal) | PBL220-24-2L-FSW-PA-DRDM-UNV-4/850HT | 18126 | 149.6 | 121.1 lm/W | -30°C / 45°C (-22°F / 113°F) | 6-F54T5HO | LA-T3766a-2.ies |

NOTE:
 System data is based on 120V input voltage. Actual performance may differ as a result of end-user environment and application.
 This fixture has been tested and listed in accordance with UL Standards. L.A. Lighting certifies that it will operate safely when installed properly, and within an ambient temperature range noted in the system data table.
 Additional lumen packages and color temperatures available.

DOOR FRAME OPTIONS

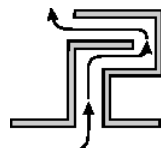
DOOR FRAME CROSS SECTION



- FS W FINISHES**
- W White Enamel
 - B Black Enamel
 - N Natural Aluminum
- STYLES**
- FS Flat Steel
 - FA Flat Extruded Aluminum
 - RA 5/8" Regressed Extruded Aluminum

AIR SLOT

- Formed air slot
- Allows air circulation for heat removal



Los Angeles Lighting Mfg. Co.
 Contact Us
 T: 626-454-8300
 F: 626-454-8399
www.lalighting.com
 10141 Olney Street
 El Monte, CA 91731
 Made in the USA



Due to continued product improvements and enhancements, Los Angeles Lighting Manufacturing Company reserves the right to alter specifications, dimensions, data, and/or materials without notice. Please visit our website to view the most current information.

© 2022 LOS ANGELES LIGHTING MANUFACTURING CO. ALL RIGHTS RESERVED.

Revised: 10/05/2022



MADE IN THE USA
 BAA Compliant

OPTICAL OPTIONS

ADDITIONAL LENSES AVAILABLE. VISIT WWW.LALIGHTING.COM/RESOURCES FOR MORE INFORMATION

STANDARD EXTRUDED PRISMATIC PATTERNS

| | |
|-------------|--|
| PA | Clear Prismatic Acrylic, No Thickness Specified, Female Prisms 3/16 Square Base, Pattern 12 |
| PA2 | Clear Prismatic Acrylic, Nom. 0.125 OA Thickness, Female Prisms 3/16 Square Base, Pattern 12 |
| FPA2 | Frosted Prismatic Acrylic, Nom. 0.125 OA Thickness, Female Prisms 3/16 Square Base, Pattern 12 |
| FFWA | Flat Frosted White Acrylic, No Thickness Specified |



Los Angeles Lighting Mfg. Co.

Contact Us
 T: 626-454-8300 10141 Olney Street
 F: 626-454-8399 El Monte, CA 91731
www.lalighting.com Made in the USA



Due to continued product improvements and enhancements, Los Angeles Lighting Manufacturing Company reserves the right to alter specifications, dimensions, data, and/or materials without notice. Please visit our website to view the most current information.

© 2022 LOS ANGELES LIGHTING MANUFACTURING CO. ALL RIGHTS RESERVED.

Revised: 10/05/2022



MADE IN THE USA
BAA Compliant