



RECESSED FLUO GPA320

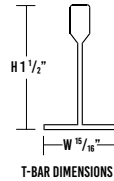
® PARABOLIC GRID LUMINAIRE

JOB	
TYPE	
DATE	

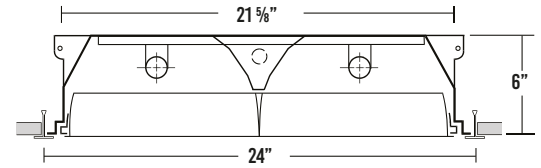
WWW.LALIGHTING.COM TEL: 626-454-8300

RECESSED PARABOLIC TROFFER FOR T-BAR CEILINGS

DIMENSIONS

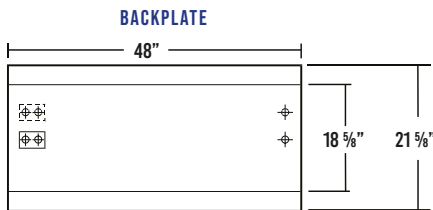
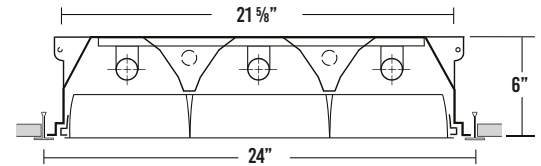


S12
CROSS SECTION



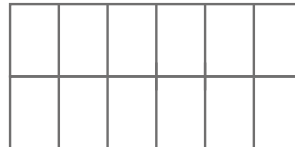
2 lamp rows shown. 4 rows also available.

S18
CROSS SECTION

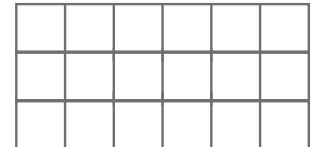


⊕ 7/8" OFFSET K.O. ⊕ ACCESS PLATE

S12
LOUVER CONFIGURATION
(2 LOUVER ROWS, 12 CELLS)



S18
LOUVER CONFIGURATION
(3 LOUVER ROWS, 18 CELLS)



SPECIFICATIONS

CONSTRUCTION

- 22 gauge cold-rolled steel housing
- Semi-specular, low iridescent aluminum louvers
- Louvers secured to housing with T-hinges and latches

FINISH

- Baked white polyester finish
- Minimum reflectance 86%

OPTICAL

- Nominal 3" deep aluminum parabolic louvers

LISTING

- UL USA and Canada Listed. Compatible with UL Fire-Rated Ceiling Assemblies.

WARRANTY

- 5-Year limited warranty standard. 10-Year limited warranty also available

APPLICATIONS

- Classrooms, Offices, Retail

FEATURES

- Recessed grid-mounted luminaire for T-bar ceilings

OPTIONS CONTACT CUSTOMER SERVICE FOR ADDITIONAL OPTIONS

- Emergency battery packs
- 20 gauge housing
- Sensors and controls
- White louvers
- Customization available upon request



Los Angeles Lighting Mfg. Co.
 Contact Us
 T: 626-454-8300
 F: 626-454-8399
 www.lalighting.com
 10141 Olney Street
 El Monte, CA 91731
 Made in the USA



Due to continued product improvements and enhancements, Los Angeles Lighting Manufacturing Company reserves the right to alter specifications, dimensions, data, and/or materials without notice. Please visit our website to view the most current information.

© 2023 LOS ANGELES LIGHTING MANUFACTURING CO. ALL RIGHTS RESERVED.

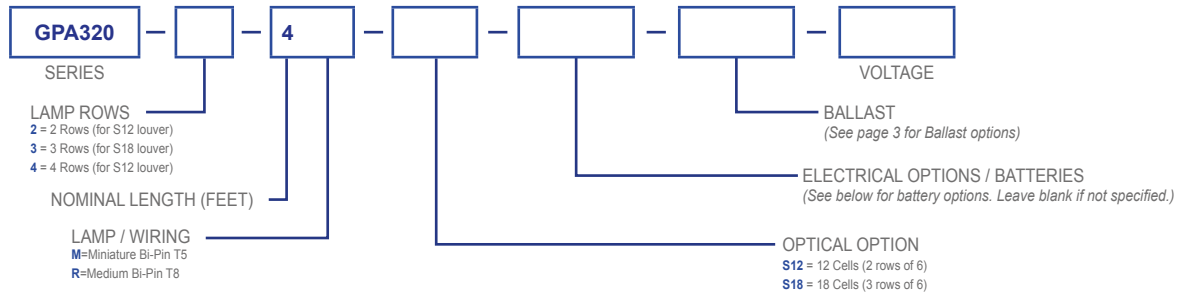
Revised: 07/03/23



ORDERING INFORMATION

ADDITIONAL OPTIONS AVAILABLE. VISIT WWW.LALIGHTING.COM/RESOURCES FOR MORE INFORMATION

FLUORESCENT PRODUCT PART # NOMENCLATURE



BATTERY PACK OPTIONS

FLUORESCENT EMERGENCY BATTERY PACKS (Minimum 90-minute operation)

BATTERY PACK REFERENCE CHART

To determine the suffix used when ordering (either BP1, BP5, or BP5B), first find your lamp type, length, and number of lamps required in emergency mode, then select your desired lumen output.

Lamp Type	Length	# Of Lamps in EM Mode	Emergency Output	
			500lm	1400lm
F28T5	4ft	1		BP5
F54T5HO (49W)	4ft	1		BP5
F54T5HO	4ft	1		BP5
F54T5HO	4ft	2		BP5B
F32T8 (25W)	4ft	1	BP1	BP5
F32T8 (28W)	4ft	1	BP1	BP5
F32T8 (28W)	4ft	2		BP5B
F32T8 (30W)	4ft	1	BP1	BP5
F32T8	4ft	1	BP1	BP5
F32T8	4ft	2		BP5B



Los Angeles Lighting Mfg. Co.
 Contact Us
 T: 626-454-8300 10141 Olney Street
 F: 626-454-8399 El Monte, CA 91731
 www.lalighting.com Made in the USA



Due to continued product improvements and enhancements, Los Angeles Lighting Manufacturing Company reserves the right to alter specifications, dimensions, data, and/or materials without notice. Please visit our website to view the most current information.

© 2023 LOS ANGELES LIGHTING MANUFACTURING CO. ALL RIGHTS RESERVED.

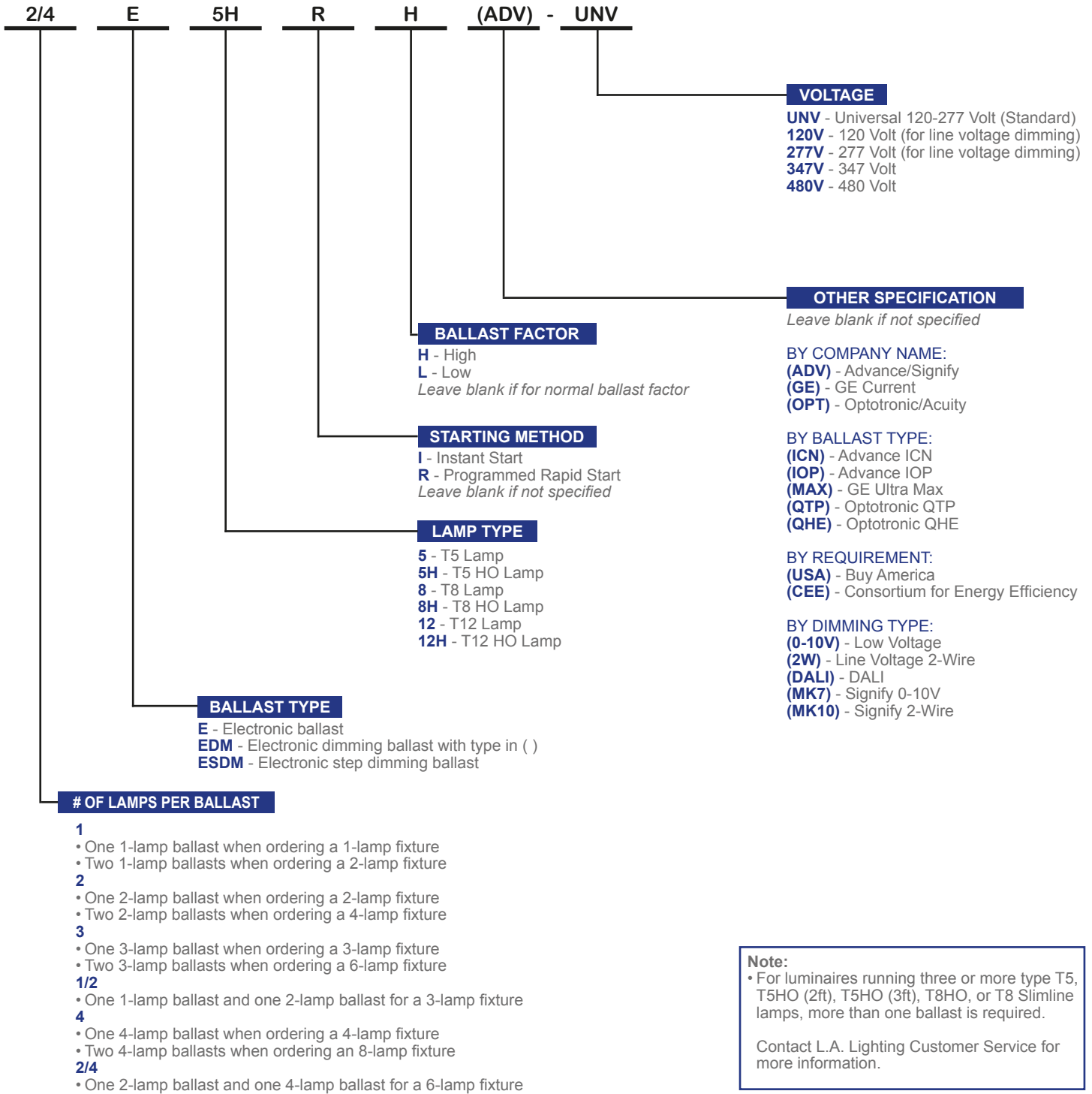
Revised: 07/03/23



MADE IN THE USA
 BAA Compliant

BALLAST OPTIONS

FLUORESCENT BALLAST OPTIONS



Los Angeles Lighting Mfg. Co.
 Contact Us
 T: 626-454-8300 10141 Olney Street
 F: 626-454-8399 El Monte, CA 91731
 www.lalighting.com Made in the USA



Due to continued product improvements and enhancements, Los Angeles Lighting Manufacturing Company reserves the right to alter specifications, dimensions, data, and/or materials without notice. Please visit our website to view the most current information.

© 2023 LOS ANGELES LIGHTING MANUFACTURING CO. ALL RIGHTS RESERVED.

Revised: 07/03/23



MADE IN THE USA
BAA Compliant