



# SURFACE MOUNT FLUO

## MPA320 2X4

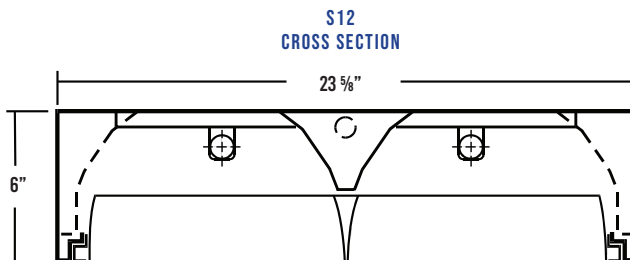
® SURFACE MOUNT PARABOLIC LUMINAIRE

JOB	
TYPE	
DATE	

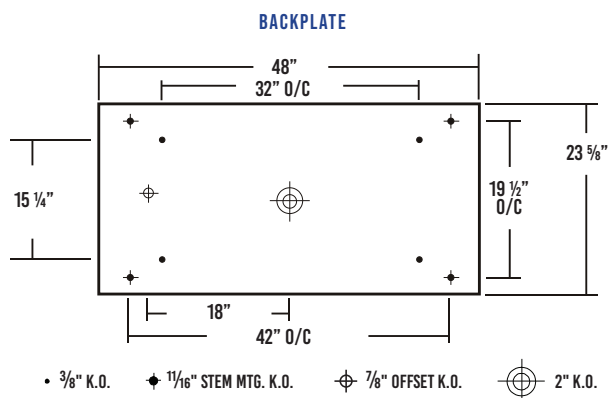
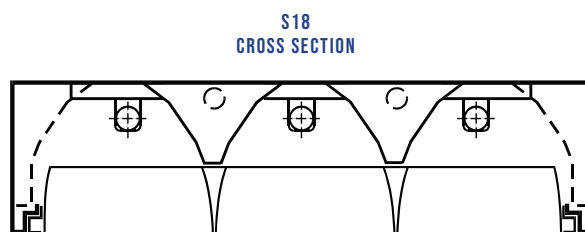
WWW.LALIGHTING.COM TEL: 626-454-8300

### SURFACE MOUNTED PARABOLIC LUMINAIRE

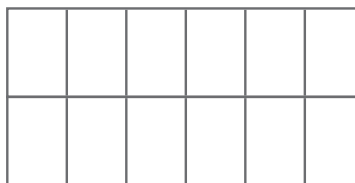
### DIMENSIONS



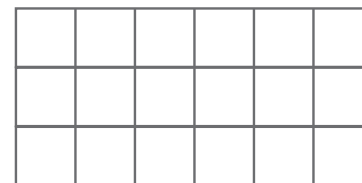
2 lamp rows shown. 4 rows also available.



**S12 LOUVER CONFIGURATION**  
(2 LOUVER ROWS, 12 CELLS)



**S18 LOUVER CONFIGURATION**  
(3 LOUVER ROWS, 18 CELLS)



### SPECIFICATIONS

#### CONSTRUCTION

- 20 gauge cold-rolled steel housing
- Semi-specular, low iridescent aluminum louvers
- Louvers secured to housing with T-hinges and latches

#### FINISH

- Baked white powder coated finish
- Painted after fabrication
- Minimum reflectance 90%

#### OPTICAL

- Nominal 3" deep aluminum parabolic louvers

#### LISTING

- UL USA and Canada Listed. Compatible with UL Fire-Rated Ceiling Assemblies.

#### WARRANTY

- 5-Year limited warranty standard. 10-Year limited warranty also available

### APPLICATIONS

- Classrooms, Offices, Retail

### FEATURES

- Parabolic luminaire for surface mounts

### OPTIONS CONTACT CUSTOMER SERVICE FOR ADDITIONAL OPTIONS

- Emergency battery packs
- Sensors and controls
- White louvers
- Customization available upon request



**Los Angeles Lighting Mfg. Co.**  
Contact Us  
T: 626-454-8300   10141 Olney Street  
F: 626-454-8399   El Monte, CA 91731  
www.lalighting.com   Made in the USA



Due to continued product improvements and enhancements, Los Angeles Lighting Manufacturing Company reserves the right to alter specifications, dimensions, data, and/or materials without notice. Please visit our website to view the most current information.

© 2023 LOS ANGELES LIGHTING MANUFACTURING CO. ALL RIGHTS RESERVED.

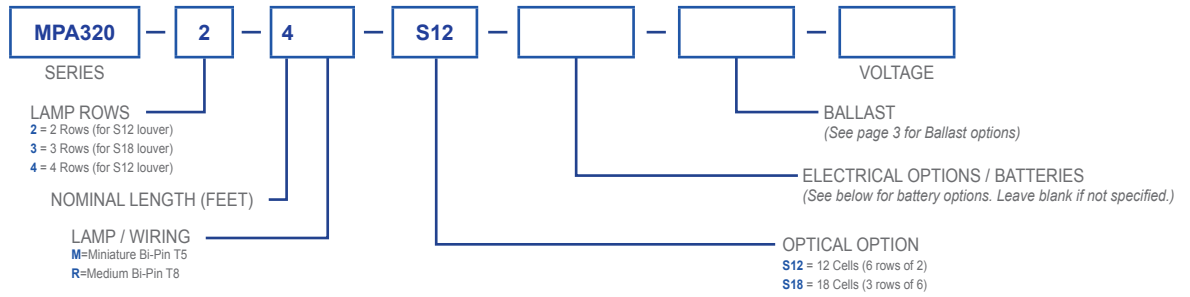
Revised: 08/14/23



**ORDERING INFORMATION**

ADDITIONAL OPTIONS AVAILABLE. VISIT [WWW.LALIGHTING.COM/RESOURCES](http://WWW.LALIGHTING.COM/RESOURCES) FOR MORE INFORMATION

**FLUORESCENT PRODUCT PART # NOMENCLATURE**



**BATTERY PACK OPTIONS**

**FLUORESCENT EMERGENCY BATTERY PACKS (Minimum 90-minute operation)**

**BATTERY PACK REFERENCE CHART**

To determine the suffix used when ordering (either BP1, BP5, or BP5B), first find your lamp type, length, and number of lamps required in emergency mode, then select your desired lumen output.

Lamp Type	Length	# Of Lamps in EM Mode	Emergency Output	
			500lm	1400lm
F28T5	4ft	1		BP5
F54T5HO (49W)	4ft	1		BP5
F54T5HO	4ft	1		BP5
F54T5HO	4ft	2		BP5B
F32T8 (25W)	4ft	1	BP1	BP5
F32T8 (28W)	4ft	1	BP1	BP5
F32T8 (28W)	4ft	2		BP5B
F32T8 (30W)	4ft	1	BP1	BP5
F32T8	4ft	1	BP1	BP5
F32T8	4ft	2		BP5B



**Los Angeles Lighting Mfg. Co.**  
 Contact Us  
 T: 626-454-8300  
 F: 626-454-8399  
[www.lalighting.com](http://www.lalighting.com)  
 10141 Olney Street  
 El Monte, CA 91731  
 Made in the USA



Due to continued product improvements and enhancements, Los Angeles Lighting Manufacturing Company reserves the right to alter specifications, dimensions, data, and/or materials without notice. Please visit our website to view the most current information.

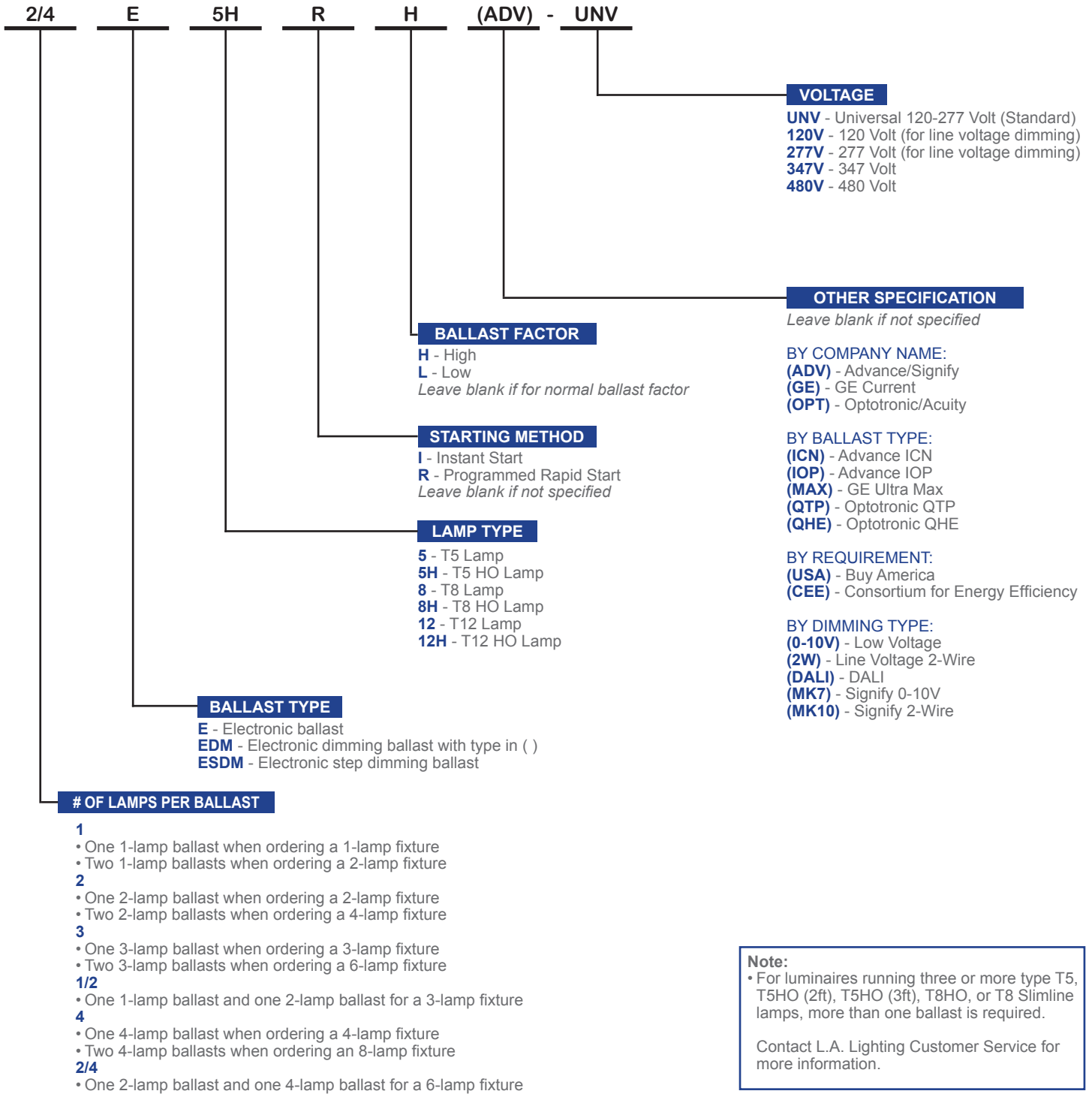
© 2023 LOS ANGELES LIGHTING MANUFACTURING CO. ALL RIGHTS RESERVED.

Revised: 08/14/23



**BALLAST OPTIONS**

**FLUORESCENT BALLAST OPTIONS**



**Los Angeles Lighting Mfg. Co.**  
 Contact Us  
 T: 626-454-8300  
 F: 626-454-8399  
 www.lalighting.com  
 10141 Olney Street  
 El Monte, CA 91731  
 Made in the USA



Due to continued product improvements and enhancements, Los Angeles Lighting Manufacturing Company reserves the right to alter specifications, dimensions, data, and/or materials without notice. Please visit our website to view the most current information.

© 2023 LOS ANGELES LIGHTING MANUFACTURING CO. ALL RIGHTS RESERVED.

Revised: 08/14/23



MADE IN THE USA  
 BAA Compliant