



# WRAPAROUND WCP300

® HIGH IMPACT WRAPAROUND LUMINAIRE

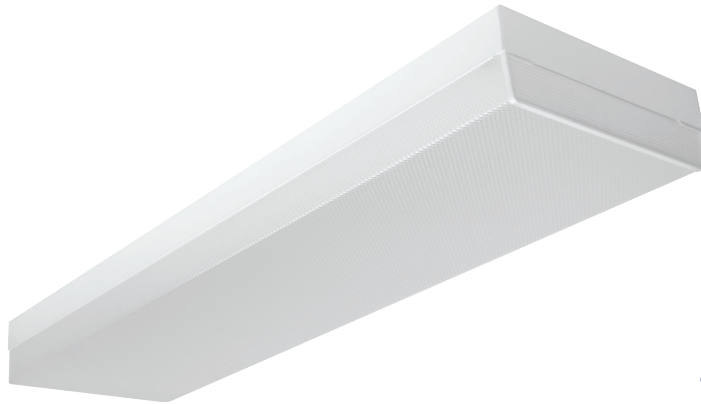


JOB

TYPE

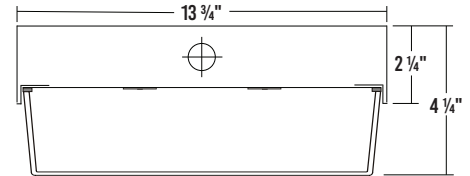
DATE

## CEILING/SUSPENSION MOUNTED

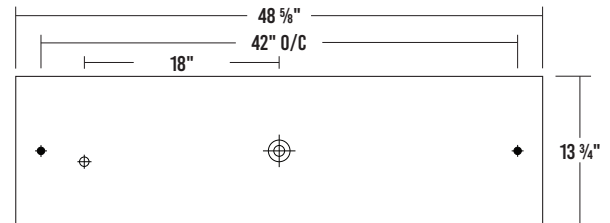


## DIMENSIONS

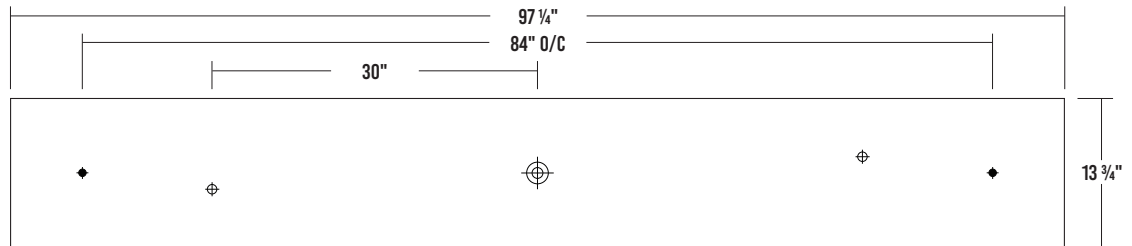
### CROSS SECTION



### 4' BACKPLATE



### 8' BACKPLATE



♦ 11/16" STEM MTG. K.O. ⊕ 7/8" OFFSET K.O. ⊗ 2" K.O.

## SPECIFICATIONS

### CONSTRUCTION

- 22 gauge cold-rolled steel welded housing

### FINISH

- Painted after fabrication
- Baked white powder-coated finish
- Minimum reflectance 90%

### OPTICAL

- High-impact clear prismatic acrylic lens (min. thickness 0.125")
- Lens secured by spring-loaded scissor clips

### ELECTRICAL

- High-efficiency drivers coupled with long-life LEDs
- Service life tested at 148,000 hours (L70), 42,000 hours (L90)
- Universal voltage 120V through 277V (347V / 480V available)
- Emergency battery pack available

### LISTING

- UL USA and Canada listed / suitable for damp locations

### WARRANTY

- 5-Year limited warranty standard. 10-Year limited warranty also available

## APPLICATIONS

- Commercial, Classrooms, Offices, Corridors

## FEATURES

- Surface / pendant mounted LED luminaire
- 0-10V dimming driver standard (other dimming types available)
- Controls and sensors available
- Wireless control options
- Supports California Title 24 compliance
- Suitable for damp locations
- Additional lumen packages and color temperatures available

## OPTIONS

- Wet location
- Controls
- Neoprene gasket
- Cord & Plug
- Emergency battery pack
- Customization available upon request



Los Angeles Lighting Mfg. Co.

Contact Us

T: 626-454-8300

F: 626-454-8399

www.lalighting.com

10141 Olney Street

El Monte, CA 91731

Made in the USA



Due to continued product improvements and enhancements, Los Angeles Lighting Manufacturing Company reserves the right to alter specifications, dimensions, data, and/or materials without notice. Please visit our website to view the most current information.

© 2024 LOS ANGELES LIGHTING MANUFACTURING CO. ALL RIGHTS RESERVED.

Revised: 06/04/24



MADE IN THE USA  
BAA Compliant

ORDERING INFORMATION      ADDITIONAL OPTIONS AVAILABLE. VISIT [WWW.LALIGHTING.COM/RESOURCES](http://WWW.LALIGHTING.COM/RESOURCES) FOR MORE INFORMATION

EXAMPLE: WCP300-4-4L-BPL1.5-DRDM-UNV-1/840

SERIES	NOMINAL LED LUMENS	NOMINAL LENGTH	OPTICAL	MECHANICAL	ELECTRICAL	DRIVER	VOLTAGE	# OF LED ROWS	CRI / CCT
WCP300						DRDM	UNV	2	
WCP300 • High Impact Square Wraparound Luminaire	4 - 4000lm 6 - 6000lm 8 - 8000lm	4L • 4'	DRP3 • High Impact Clear Prismatic Acrylic • Min. .0125 Thickness	WL • Wet Location • Electro-Galvanized Steel Housing  GSK • Gasket  *Leave blank if not specified	BPL1.5 • 1500 lm emergency battery pack  MSH • Microwave Motion Sensor-On/Off  MSHSD • Microwave Motion Sensor-High/Low  WLC(LED RU) • EnOcean Zone Controller  *Leave blank if not specified	DRDM • 0-10V Dimming Driver	UNV • 120V-277V  120V • 120 Volt  277V • 277 Volt	2 • Two LED Rows	827 • 80+ CRI / 2700K  835 • 80+ CRI / 3500K  840 • 80+ CRI / 4000K  850 • 80+ CRI / 5000K  865 • 80+ CRI / 6500K  8TW • 80+ CRI Tunable White 2700K-6500K  90 CRI also available.  Contact customer service for additional CRI/CCT packages.
	12 - 12000lm	8L • 8'							
Standard options for WCP300 shown above. For additional options, including lumen packages, controls, lenses, switches, finishes, and more, visit <a href="http://www.lalighting.com/resources">www.lalighting.com/resources</a> or contact customer service.									

SENSORS AND CONTROLS

High Frequency (Microwave) Motion Sensors

Detects movement through low materials, including polycarbonate, acrylic and glass diffusers.

MSH - Microwave Motion Sensor – On/Off

- Turns luminaire on/off in response to motion

MSHSD - Microwave Motion Sensor – High/Low

- Increases/decreases illumination in response to motion

EnOcean® Zone Controller

WLC(LED RU) - LED Relay Zone Controller

- Pre-installed inside luminaire
- Can support a single luminaire or multiple daisy-chained luminaires



Los Angeles Lighting Mfg. Co.  
Contact Us  
T: 626-454-8300      10141 Olney Street  
F: 626-454-8399      El Monte, CA 91731  
[www.lalighting.com](http://www.lalighting.com)      Made in the USA



Due to continued product improvements and enhancements, Los Angeles Lighting Manufacturing Company reserves the right to alter specifications, dimensions, data, and/or materials without notice. Please visit our website to view the most current information.

© 2024 LOS ANGELES LIGHTING MANUFACTURING CO. ALL RIGHTS RESERVED.

Revised: 06/04/24

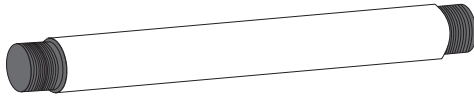
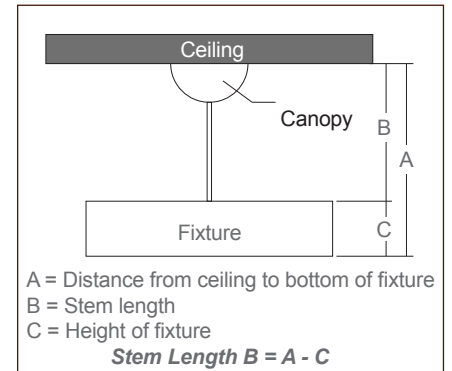


## MOUNTING HARDWARE

**STEM (Specify Length)**

- 3/8" IPS, nominal OD 5/8"
- Threaded 1" each end
- 2 lock nuts provided per stem
- Standard lengths: 6", 12", 18", 24", 30", 36", 48"
- Baked white enamel finish

Other lengths & finishes are available as specified

**Stem Length Calculation****CANOPY / CABLE SUSPENSION SYSTEM**

- Self-locking, one-step adjustable suspension device with canopies
- Provides full 360° rotation

**433B**

- Canopy with cable
- No power cord
- Cable length 48" and 96"
- Max. Weight 196 lbs.

**433B-48 W****COLOR**

**W** - White  
**B** - Black

**CABLE LENGTH**

**48** - 48 inches  
**96** - 96 inches  
 (other lengths as specified)

**444F**

- Feed-in canopy with straight cord
- Includes power cord
- Cable length 48" and 96"
- Max. Weight 196 lbs

**444F-48SW-2C****# OF CIRCUITS**

**2C** - Two circuits  
**LV** - 0-10V dimming  
**Blank** - One circuit

**COLOR**

**W** - White  
**B** - Black

**CORD TYPE**

**S** - Straight cord

**CABLE LENGTH**

**48** - 48 inches  
**96** - 96 inches  
 (other lengths as specified)



**Los Angeles Lighting Mfg. Co.**

Contact Us

T: 626-454-8300  
 F: 626-454-8399  
 www.lalighting.com

10141 Olney Street  
 El Monte, CA 91731  
 Made in the USA



Due to continued product improvements and enhancements, Los Angeles Lighting Manufacturing Company reserves the right to alter specifications, dimensions, data, and/or materials without notice. Please visit our website to view the most current information.

© 2024 LOS ANGELES LIGHTING MANUFACTURING CO. ALL RIGHTS RESERVED.

Revised: 06/04/24



SYSTEM DATA

ADDITIONAL LUMEN PACKAGES AVAILABLE. CONTACT CUSTOMER SERVICE FOR MORE INFORMATION

4' - LED LUMEN PACKAGE	NORMAL AMBIENT TEMPERATURE PRODUCT CODE	DELIVERED LUMENS	SYSTEM WATTS	LUMINAIRE EFFICACY	AMBIENT TEMP.	FLUORESCENT EQUIVALENT	IES FILES
4000 Lumens (Nominal)	WCP300-4-4L-DRP3-DRDM-UNV-2/840	3681	25.8	142.9 lm/W	-20°C / 35°C (-4°F / 95°F)	1-F54T5HO, 2-F32T8	*
6000 Lumens (Nominal)	WCP300-6-4L-DRP3-DRDM-UNV-2/840	5477	39.0	140.6 lm/W	-20°C / 35°C (-4°F / 95°F)	3-F32T8	*
8000 Lumens (Nominal)	WCP300-8-4L-DRP3-DRDM-UNV-2/840	7229	52.7	137.2 lm/W	-20°C / 35°C (-4°F / 95°F)	2-F54T5HO, 4-F32T8	*

8' - LED LUMEN PACKAGE	NORMAL AMBIENT TEMPERATURE PRODUCT CODE	DELIVERED LUMENS	SYSTEM WATTS	LUMINAIRE EFFICACY	AMBIENT TEMP.	FLUORESCENT EQUIVALENT	IES FILES
12000 Lumens (Nominal)	WCP300-12-8L-DRP3-DRDM-UNV-2/840	11026	76.0	145.9 lm/W	-20°C / 35°C (-4°F / 95°F)	6-F32T8	*

**NOTE:**  
System data as of 9/8/23.  
Subject to change without notice.

System data is based on 120V input voltage. Actual performance may differ as a result of end-user environment and application. This fixture has been tested and listed in accordance with UL Standards. L.A. Lighting certifies that it will operate safely when installed properly, and within an ambient temperature range noted in the system data table.

Additional lumen packages and color temperatures available.



**Los Angeles Lighting Mfg. Co.**  
Contact Us  
T: 626-454-8300  
F: 626-454-8399  
www.lalighting.com  
10141 Olney Street  
El Monte, CA 91731  
Made in the USA



Due to continued product improvements and enhancements, Los Angeles Lighting Manufacturing Company reserves the right to alter specifications, dimensions, data, and/or materials without notice.  
Please visit our website to view the most current information.

© 2024 LOS ANGELES LIGHTING MANUFACTURING CO. ALL RIGHTS RESERVED.

Revised: 06/04/24

