

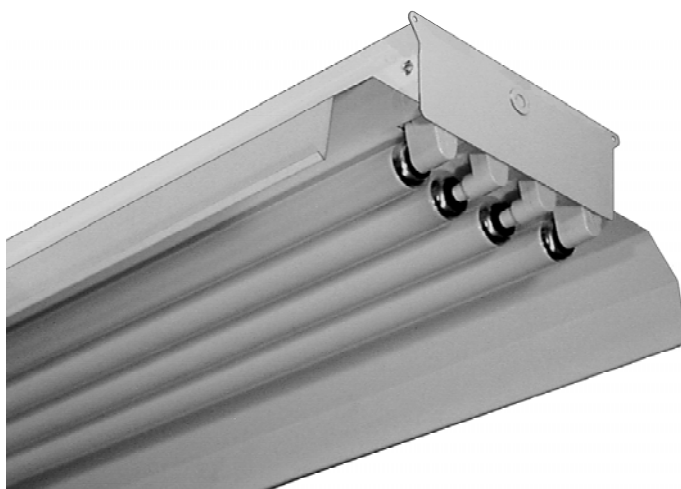


# INDUSTRIAL

## IND400 SERIES



### 16½" Wide Reflector Industrial Luminaire



- 16½" Wide Reflector Industrial Luminaire
- 22 Ga. Cold Rolled Steel Housing
- Baked White Polyester Finish
- Screw-On End Caps
- Reflector Secured by Quarter turn Fasteners
- Suitable for Damp Locations
- Available with:
  - Fluorescent and LED T8 (Internally Driven)
  - Switch
  - 14 Ga. Wire Guard



*Photometric Data and IES Files are Available on [www.lalighting.com](http://www.lalighting.com)*



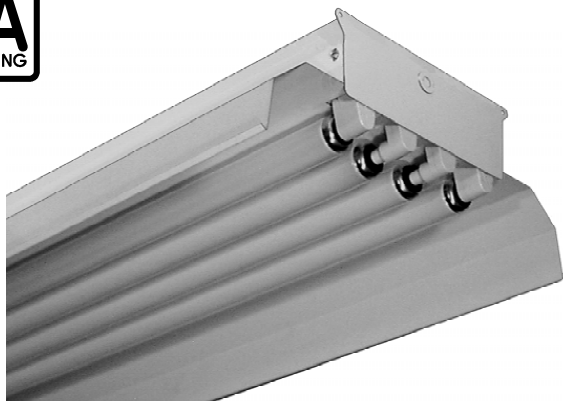
**LOS ANGELES LIGHTING MFG. CO.**

10141 OLNEY ST. / EL MONTE, CA 91731

TEL : 626-454-8300 FAX : 626-454-8399

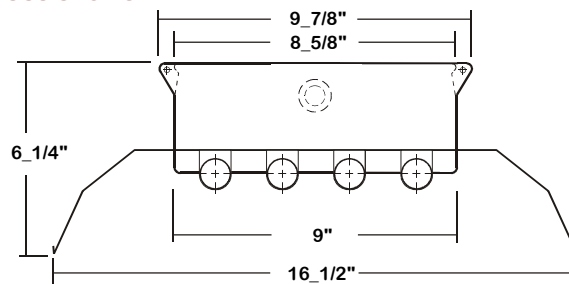
[www.lalighting.com](http://www.lalighting.com)

# INDUSTRIAL - LED T8 (Internally Driven)



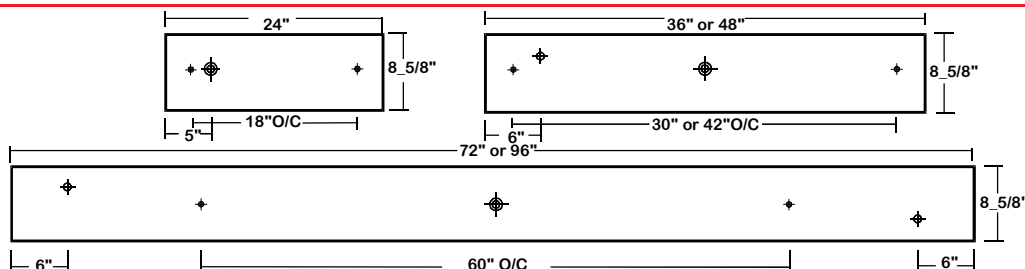
## IND400 SERIES - LED T8

### CROSS SECTION



### BACK PLATE

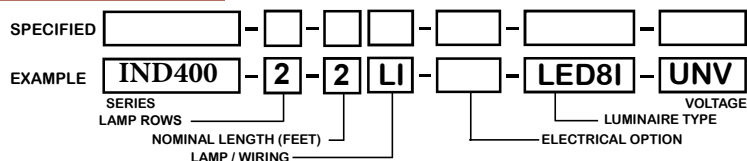
- ✦ 11/16" STEM MTG. K.O.
- ⊕ 7/8" OFFSET K.O.
- ⊕ 2" K.O.



### CATALOG NUMBER

	Nom. Length	Total Lamps		Nom. Length	Total Lamps		Nom. Length	Total Lamps
IND400-2-2Lx	2'	2	IND400-4-3Lx	3'	4	IND400-3-6LxT	6'	6
IND400-3-2Lx	2'	3	IND400-2-4Lx	4'	2	IND400-4-6LxT	6'	8
IND400-4-2Lx	2'	4	IND400-3-4Lx	4'	3	IND400-2-8LxT	8'	4
IND400-2-3Lx	3'	2	IND400-4-4Lx	4'	4	IND400-3-8LxT	8'	6
IND400-3-3Lx	3'	3	IND400-2-6LxT	6'	4	IND400-4-8LxT	8'	8

### ORDERING GUIDE



### TS2 - LED Luminaire

#### On/Off Safety Switch



- Easily accessible on exterior of wire way.
- Allows individual fixture to be switched ON/OFF during re-lamping or Maintenance.
- Prevents damage to lamp and electrical shock during lamping and re-lamping.
- Allows safe entry to wire way channel where power connector can be disconnected for maintenance to fixture.

### LAMP / WIRING

**LI = LED T8 internal driver light tube.**  
Both ends powered.  
Shunted sockets used.



**LR = LED T8 internal driver light tube.**  
Single end powered.  
Non-shunted sockets used.



### OPTIONS AND ACCESSORIES

#### ELECTRICAL OPTIONS

- LED Luminaire ON/OFF Safety Switch TS2

#### ACCESSORIES

- Wire Guard - 14 Ga.
- 12" Coupling For Row Mounting
- Channel Hangers
- 6" Leg Height V-Hook
- Fixture Suspension System

CAT. NO.  
WG14-IND400  
CMC-400  
CH-400  
V6  
\*

### SPECIFICATIONS

- TYPE
- CONSTRUCTION
- FINISH
- REFLECTOR
- WIRING
- LABELS

Industrial luminaire for surface or suspended mounting.  
22 ga. cold rolled steel housing. (20 ga. housing available as specified.) End plates are fastened to housing by sheet metal screws to assure rigidity.  
Baked white polyester finish, minimum reflectance 86%. (Powder coated finish available.)  
22 ga. cold rolled steel reflector standard.  
Operate LED T8 internally driven light tube(s)\*\*.  
Suitable for damp locations.

\*\* Lamp(s) by others.

