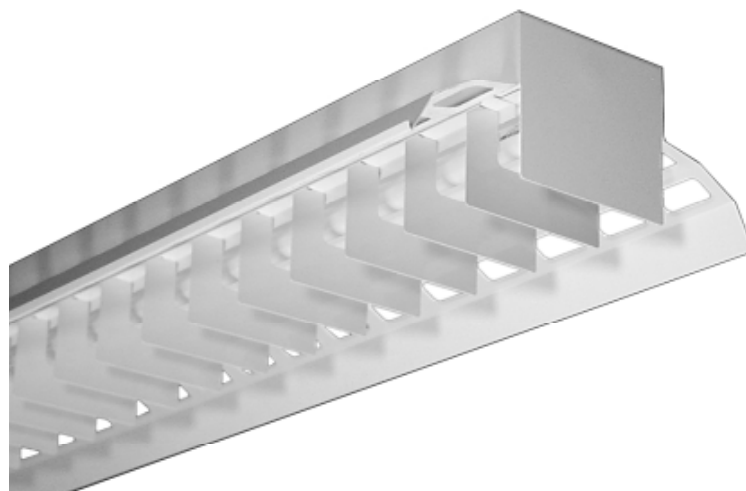




ARCHITECTURAL

ABI100 SERIES Baffled Retail Luminaire



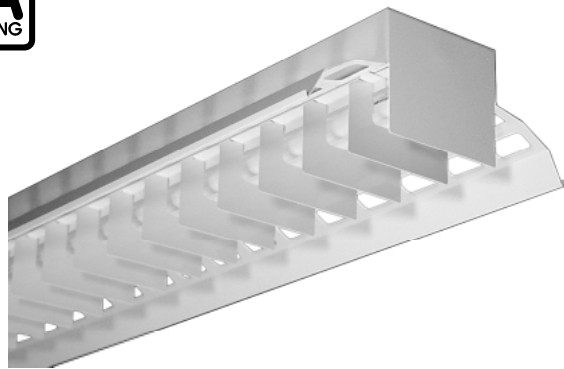
- Baffled Retail Luminaire
- Industrial Appearance
- Welded And Painted After Fabrication
- Row Mountable
- Suitable for Damp Locations
- Available with:
 - Fluorescent, LED and LED TUBE (Internally Driven)
 - Closed or Slotted Reflector
 - Solid or Perforated Baffled Louver
 - Emergency Battery Pack



Photometric Data and IES Files are Available on www.lalighting.com

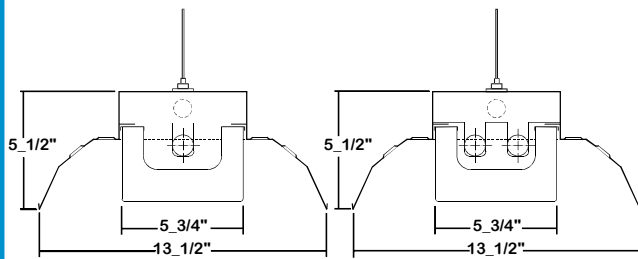


LOS ANGELES LIGHTING MFG. CO.
 10141 OLNEY ST. / EL MONTE, CA 91731
TEL : 626-454-8300 FAX : 626-454-8399
www.lalighting.com

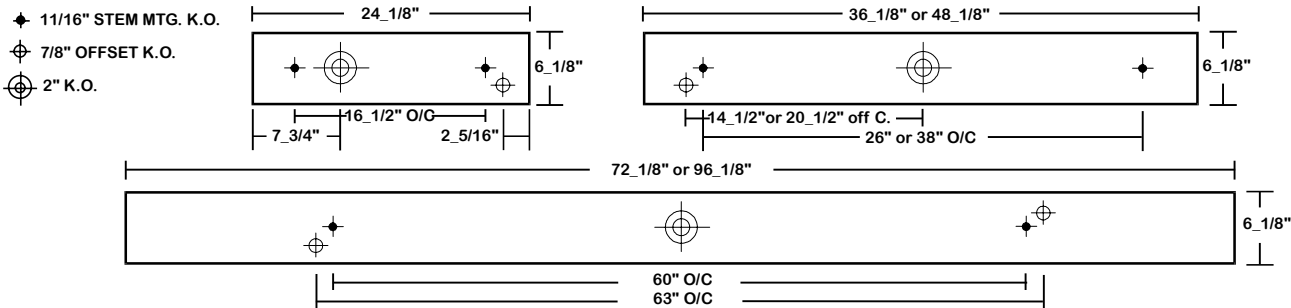


ABI100 SERIES

CROSS SECTION



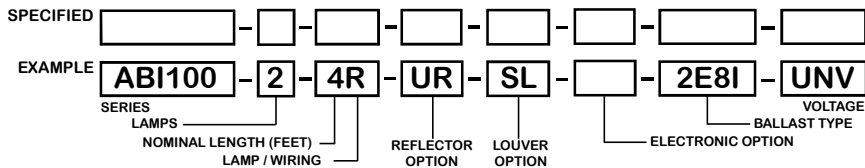
BACK PLATE



CATALOG NUMBER

	NOMINAL LENGTH	TOTAL LAMPS		NOMINAL LENGTH	TOTAL LAMPS
ABI100-1-2R	2'	1	ABI100-2-2R	2'	2
ABI100-1-3R	3'	1	ABI100-2-3R	3'	2
ABI100-1-4R	4'	1	ABI100-2-4R	4'	2
ABI100-1-6RT	6'	2	ABI100-2-6RT	6'	4
ABI100-1-8RT	8'	2	ABI100-2-8RT	8'	4

ORDERING GUIDE



NOTE: LAMP/WIRING*
 R = Medium Bi-Pin T8
 RT = Medium Bi-Pin T8, Tandem Wiring

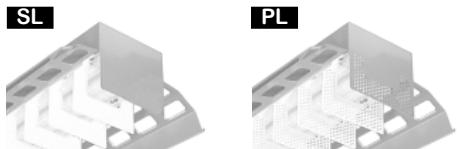
OPTIONS AND ACCESSORIES

REFLECTOR OPTIONS

Option	SUFFIX
Closed Reflector	CR
Slotted Reflector	UR

LOUVER OPTIONS

Option	SUFFIX
Solid Baffled Louvers	SL
Perforated Baffled Louvers	PL



*See Appropriate Reference Page

ELECTRICAL OPTIONS

Option	SUFFIX
Emergency Battery Pack	BP*
External Line Fusing (HLR/GLR)	ELF

BALLAST OPTIONS

Option	SUFFIX
Electronic T8	E8*
Electronic Step Dimming T8	ESDM8*

ACCESSORIES

Option	CAT. NO.
Fixture Suspension System	*

SPECIFICATIONS

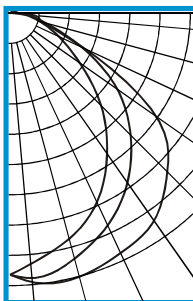
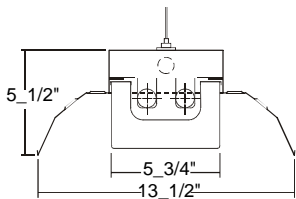
- **TYPE** Architectural baffle luminaire.
- **CONSTRUCTION** Cold rolled steel welded housing.
- **FINISH** Baked white powder coated finish standard, minimum reflectance 90%. Painted after fabrication. (Other colors available)
- **REFLECTOR** Slotted reflector standard, solid reflector available as specified.
- **OPTICS** Solid baffle louvers standard, perforated baffle louvers available.
- **WIRING** 120v 60Hz., 277v 60Hz., UNV (universal voltage 120v thru 277v.) or as otherwise specified.
- **LABELS** U.L. Listed. Suitable for damp locations.



PHOTOMETRIC DATA

ABI100-2-4R-UR-SL-E8

TEST NO.=LA-T0680
 LAMP TYPE=FO32T8
 NO. OF LAMP=2
 LUMENS PER LAMP=2900
 WATTS PER LAMP=32
 BALLAST FACTOR=1
 PHOTOMETRY TYPE=C



CANDLEPOWER

ANGLE	END	45	CROSS
0	1378	1378	1378
5	1323	1401	1424
15	1225	1334	1436
25	1090	1227	1390
35	892	1081	1328
45	672	897	1172
55	440	684	933
65	276	407	415
75	157	187	174
85	66	97	128
90	22	50	60
95	11	37	33
105	6	25	18
115	3	15	7
125	0	10	3
135	0	5	1
145	0	2	3
155	0	0	0
165	0	0	0
175	0	0	0
180	0	0	0

ZONAL LUMEN SUMMARY

DEGREES	LUMENS	% LAMP	% FIXTURE
0-30	1081	18.6	28.3
0-40	1769	30.5	46.4
0-60	3088	53.2	81.0
0-90	3740	64.5	98.1
90-120	66	1.1	1.7
90-150	74	1.3	1.9
90-180	74	1.3	1.9
0-180	3814	65.8	100.0

Lumen Output = 3814 lumens
 Luminaire Efficiency = 65.8%

SPACING CRITERION

ALONG	ACROSS
1.09	1.45

This space is intentionally left blank.

This space is intentionally left blank.

This space is intentionally left blank.

