



BAYLIGHTER™ LED

HBI609 SERIES

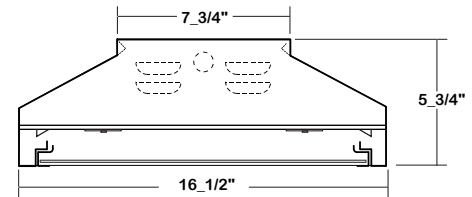
INDUSTRIAL HIGH IMPACT HIGH BAY LUMINAIRE

DATE	
JOB	

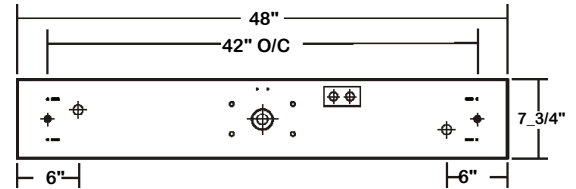
WWW.LALIGHTING.COM
626-454-8300

SURFACE / PENDANT / SUSPENSION MOUNTED HIGH IMPACT HIGH BAY LED LUMINAIRE

DIMENSIONS



- 3/16" K.O. • 11/16" STEM MTG. K.O. • ACCESS PLATE
- V-HOOK • 7/8" OFFSET K.O. • 2" K.O.



APPLICATIONS

- Commercial, Industrial, Gymnasium, High Impact Areas, Vandal Resistant Areas

FEATURES

- 0-10V dimming driver standard
- Supports California Title 24 compliance
- Safety cables attached to door frame and LED gear tray

OPTIONS

- **High (HT)** ambient temperature version available for extreme temperature ranges
- Full customization available upon request
- Additional lumen packages and color temperatures available
- Controls and sensors available
- Custom colors available
- Variety of lenses available
- Emergency battery pack available
- 10 kV surge protector
- 11 ga. wire guard available
- Cable suspension systems available
- Tamper proof screws available
- Pendant mounting adapter available
- Hub available

SPECIFICATIONS

CONSTRUCTION

- 22 ga. cold rolled steel welded housing (20 ga. housing available as specified)
- 20 ga. electro-galvanized steel door frame secured by full length stainless steel piano hinge and 2 captive stainless steel screws
- One way polyurethane gasket standard (one way neoprene gasket available)

FINISH

- Baked white powder coated finish / painted after fabrication / minimum reflectance 90%

OPTICAL

- High impact clear prismatic acrylic lens (nominal 0.125) standard

ELECTRICAL

- High efficiency drivers coupled with long-life LEDs
- Service life tested at 50,000-198,000 hours (L70), up to 59,000 hours (L90)
- Universal voltage 120V through 277V (347V / 480V available)
- Power Factor (PF) ≥ 0.9
- Total Harmonic Distortion (THD) ≤ 20%

LISTING

- UL USA and Canada listed / suitable for damp locations

WARRANTY

- 5-year limited warranty



Los Angeles Lighting Mfg. Co.
Contact Us
T: 626-454-8300 10141 Olney Street
F: 626-454-8399 El Monte, CA 91731
www.lalighting.com Made in the USA



Due to continued product improvements and enhancements, Los Angeles Lighting Manufacturing Company reserves the right to alter specifications, dimensions, data, and/or materials without notice. Please visit our website to view the most current information.

© 2025 LOS ANGELES LIGHTING MANUFACTURING CO. ALL RIGHTS RESERVED.

Revised: 10/1/2025



ORDERING INFORMATION ADDITIONAL OPTIONS AVAILABLE. VISIT WWW.LALIGHTING.COM/RESOURCES FOR MORE INFORMATION

EXAMPLE: HBI609-24-4L-PA2-BPL3.0-DRDM-UNV-2/840HT

SERIES	NOMINAL LED LUMENS	NOMINAL LENGTH	OPTICAL	MECHANICAL	ELECTRICAL	DRIVER	VOLTAGE	# OF LED ROWS	CRI / CCT	AMBIENT TEMP.
HBI609		4L						2		
HBI609 • Industrial High Bay LED Luminaire	8 - 8000 lm 12 - 12000 lm 16 - 16000 lm 20 - 20000 lm 24 - 24000 lm 28 - 28000 lm 32 - 32000 lm High Efficacy 8HE - 8000 lm 12HE - 12000 lm 14HE - 14000 lm	4L • 4'	PA2 • Clear Prismatic Acrylic Nom. 0.125 FPA2 • Frosted Prismatic Acrylic Nom. 0.125 DRP2 • High Impact Clear Prismatic Acrylic Nom. 0.125 DRP8 • High Impact Clear Prismatic Acrylic Nom. 0.187	HUB • Aluminum Die Cast Hub (safety cable set included) SMA • Pendant Mounting Adapter (safety cable set included) GSKN1 • One Way Neoprene Gasket TP • Tamper Proof Screws (Hex with Post) *Leave blank if not specific	BPL1.5 • 1500 lm Emergency Battery Pack BPL3.0 • 3000 lm Emergency Battery Pack SP10 • 10 kV Surge Protector MS(xx) • Motion Sensor WLC(LED RU) • Wireless Control *Leave blank if not specified	DRDM • 0-10V Dimming Driver	UNV • 120V-277V	2 • Two LED Rows	827 • 80+CRI / 2700K 830 • 80+CRI / 3000K 835 • 80+CRI / 3500K 840 • 80+CRI / 4000K 850 • 80+CRI / 5000K 865 • 80+CRI / 6500K 8TW • 80+CRI Tunable White 2700K-6500K *90CRI Also available *827, 830, 865, and 8TW options not available on High Temp (HT) systems	HT • High Ambient Temp. *Leave blank if not specified *HT cannot be combined with High Efficacy (HE) systems
Standard options for HBI609 shown above. For additional options, including lumen packages, controls, switches, finishes, and more, visit www.lalighting.com/resources or contact customer service.									Contact customer service for additional CRI/CCT packages.	



Los Angeles Lighting Mfg. Co.
 Contact Us
 T: 626-454-8300 10141 Olney Street
 F: 626-454-8399 El Monte, CA 91731
www.lalighting.com Made in the USA



Due to continued product improvements and enhancements, Los Angeles Lighting Manufacturing Company reserves the right to alter specifications, dimensions, data, and/or materials without notice. Please visit our website to view the most current information.

© 2025 LOS ANGELES LIGHTING MANUFACTURING CO. ALL RIGHTS RESERVED.

Revised: 10/1/2025



SYSTEM DATA

ADDITIONAL LUMEN PACKAGES AVAILABLE. CONTACT CUSTOMER SERVICE FOR MORE INFORMATION

Normal Temp

4'	LED LUMEN PACKAGE	NORMAL AMBIENT TEMPERATURE PRODUCT CODE	DELIVERED LUMENS	SYSTEM WATTS	LUMINAIRE EFFICACY	AMBIENT TEMP.	FLUORESCENT EQUIVALENT	IES FILES
	8000 Lumens (Nominal)	HBI609-8-4L-PA2-DRDM-UNV-2/840	6773	52.7	128.6 lm/W	-20°C / 35°C (-4°F / 95°F)	3x F32T8	*
	12000 Lumens (Nominal)	HBI609-12-4L-PA2-DRDM-UNV-2/840	10241	81.9	125.0 lm/W	-20°C / 35°C (-4°F / 95°F)	5x F32T8	*
	16000 Lumens (Nominal)	HBI609-16-4L-PA2-DRDM-UNV-2/840	13432	98.1	136.9 lm/W	-20°C / 35°C (-4°F / 95°F)	3x F54T5HO 6x F32T8	*
	20000 Lumens (Nominal)	HBI609-20-4L-PA2-DRDM-UNV-2/840	16793	123.0	136.6 lm/W	-20°C / 35°C (-4°F / 95°F)	4x F54T5HO	*
	24000 Lumens (Nominal)	HBI609-24-4L-PA2-DRDM-UNV-2/840	19942	150.6	132.4 lm/W	-20°C / 35°C (-4°F / 95°F)	5x F54T5HO	*
	28000 Lumens (Nominal)	HBI609-28-4L-PA2-DRDM-UNV-2/840	23388	181.1	129.2 lm/W	-20°C / 35°C (-4°F / 95°F)	6x F54T5HO	*
	32000 Lumens (Nominal)	HBI609-32-4L-PA2-DRDM-UNV-2/840	26921	200.2	134.5 lm/W	-20°C / 35°C (-4°F / 95°F)	6x F54T5HO	*

Normal Temp High Efficacy

4'	LED LUMEN PACKAGE	NORMAL AMBIENT TEMPERATURE (HIGH EFFICACY) PRODUCT CODE	DELIVERED LUMENS	SYSTEM WATTS	LUMINAIRE EFFICACY	AMBIENT TEMP.	FLUORESCENT EQUIVALENT	IES FILES
	8000 Lumens (Nominal)	HBI609-8HE-4L-PA2-DRDM-UNV-2/840	6630	45.3	146.4 lm/W	-20°C / 35°C (-4°F / 95°F)	3x F32T8	*
	12000 Lumens (Nominal)	HBI609-12HE-4L-PA2-DRDM-UNV-2/840	10015	71.1	140.8 lm/W	-20°C / 35°C (-4°F / 95°F)	5x F32T8	*
	14000 Lumens (Nominal)	HBI609-14HE-4L-PA2-DRDM-UNV-2/840	11608	83.7	138.6 lm/W	-20°C / 35°C (-4°F / 95°F)	5x F32T8	*

High Ambient Temp

4'	LED LUMEN PACKAGE	NORMAL AMBIENT TEMPERATURE PRODUCT CODE	DELIVERED LUMENS	SYSTEM WATTS	LUMINAIRE EFFICACY	AMBIENT TEMP.	FLUORESCENT EQUIVALENT	IES FILES
	8000 Lumens (Nominal)	HBI609-8-4L-PA2-DRDM-UNV-2/840HT	6632	44.1	150.3 lm/W	-30°C / 50°C (-22°F / 122°F)	3x F32T8	*
	12000 Lumens (Nominal)	HBI609-12-4L-PA2-DRDM-UNV-2/840HT	10137	68.8	147.4 lm/W	-30°C / 50°C (-22°F / 122°F)	5x F32T8	*
	16000 Lumens (Nominal)	HBI609-16-4L-PA2-DRDM-UNV-2/840HT	13524	95.1	142.3 lm/W	-30°C / 50°C (-22°F / 122°F)	3x F54T5HO 6x F32T8	*
	20000 Lumens (Nominal)	HBI609-20-4L-PA2-DRDM-UNV-2/840HT	16792	123.0	136.6 lm/W	-30°C / 50°C (-22°F / 122°F)	4x F54T5HO	*
	24000 Lumens (Nominal)	HBI609-24-4L-PA2-DRDM-UNV-2/840HT	19941	149.6	133.3 lm/W	-30°C / 50°C (-22°F / 122°F)	5x F54T5HO	*
	28000 Lumens (Nominal)	HBI609-28-4L-PA2-DRDM-UNV-2/840HT	23440	170.1	138.0 lm/W	-30°C / 50°C (-22°F / 122°F)	6x F54T5HO	*
	32000 Lumens (Nominal)	HBI609-32-4L-PA2-DRDM-UNV-2/840HT	26609	197.3	134.9 lm/W	-30°C / 50°C (-22°F / 122°F)	6x F54T5HO	*



Los Angeles Lighting Mfg. Co.
 Contact Us
 T: 626-454-8300 10141 Olney Street
 F: 626-454-8399 El Monte, CA 91731
 www.lalighting.com Made in the USA



Due to continued product improvements and enhancements, Los Angeles Lighting Manufacturing Company reserves the right to alter specifications, dimensions, data, and/or materials without notice. Please visit our website to view the most current information.

© 2025 LOS ANGELES LIGHTING MANUFACTURING CO. ALL RIGHTS RESERVED.

Revised: 10/1/2025



OPTICAL OPTIONS

STANDARD LENSES FOR HBI609

DRP2	High Impact Clear Prismatic Acrylic, Nom. 0.125 OA Thickness, Female Prisms 3/16 Square Base
DRP8	High Impact Clear Prismatic Acrylic, Nom. 0.187 OA Thickness, Female Prisms 3/16 Square Base
PPC2	Clear Prismatic Polycarbonate, Nom. 0.125 OA Thickness, Female Prisms 3/16 Square Base
CPC2	Clear Polycarbonate, Nom. 0.125 OA Thickness

ADDITIONAL AVAILABLE LENSES

(Not all optics suitable for fixture. Please consult factory to ensure selected optical option suits fixture. Please consult factory regarding any optical options not shown)

EXTRUDED PRISMATIC PATTERNS

FPA2	Frosted Prismatic Acrylic, Nom. 0.125 OA Thickness
PA	Clear Prismatic Acrylic, No Thickness Specified, Female Prisms 3/16 Square Base
PA2	Clear Prismatic Acrylic, Nom. 0.125 OA Thickness, Female Prisms 3/16 Square Base
PA3	Clear Prismatic Acrylic, Min. 0.125 OA Thickness, Female Prisms 3/16 Square Base
PA8	Clear Prismatic Acrylic, Nom. 0.187 OA Thickness, Female Prisms 3/16 Square Base
P15	Clear Prismatic Acrylic, Nom. 0.200 OA Thickness, Female Prisms 3/8 Square Base
P195	Clear Prismatic Acrylic, Nom. 0.150 OA Thickness, Male Conical Prisms 3/16 Square Base
P198	Clear Prismatic Acrylic, Nom. 0.187 OA Thickness, Male Conical Prisms 3/16 Square Base
PWA2	White Prismatic Acrylic, Nom. 0.125 OA Thickness, Female Prisms 3/16 Square Base
P3E	3E Batwing Pattern Lens
P195RF	Clear Prismatic Acrylic, 19 Shunts Radio Frequencies To Ground, Nom. 0.150 OA Thickness
PA2UV	Clear Prismatic Acrylic, UV Blocking, Nom. 0.125 OA Thickness

FLAT DIFFUSERS

FWA	Flat White Acrylic, No Thickness Specified, Stippled Finish	FWA2	Flat White Acrylic, Nom. 0.125 Thickness, Stippled Finish
CA	Clear Acrylic, No Thickness Specified	FFA	Frosted Flat Acrylic, No Thickness Specified
CA2	Clear Acrylic, Nom. 0.125 OA Thickness	FFA2	Frosted Flat Acrylic, Nom. 0.125 Thickness
CA8	Clear Acrylic, Nom. 0.187 OA Thickness		

HIGH IMPACT

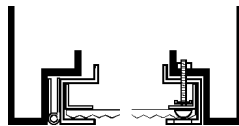
VL25	Clear Polycarbonate, Nom. 0.125 Thickness with 0.125 Clear Prismatic Acrylic Overlay
VL37	Clear Polycarbonate, Nom. 0.250 Thickness with 0.125 Clear Prismatic Acrylic Overlay
CPC2	Clear Polycarbonate, Nom. 0.125 OA Thickness
CPC8	Clear Polycarbonate, Nom. 0.187 OA Thickness
PPC8	Clear Prismatic Polycarbonate, Nom. 0.187 OA Thickness, Female Prisms 3/16 Square Base
DRP3	High Impact Clear Prismatic Acrylic, Min. 0.125 OA Thickness, Female Prisms 3/16 Square Base

DOOR FRAME

FEATURES

- Full Length Piano hinge
- Two Captive Screws
- Inner Frame Lens Retainer Rail

CROSS SECTION



Los Angeles Lighting Mfg. Co.
 Contact Us
 T: 626-454-8300 10141 Olney Street
 F: 626-454-8399 El Monte, CA 91731
 www.lalighting.com Made in the USA



Due to continued product improvements and enhancements, Los Angeles Lighting Manufacturing Company reserves the right to alter specifications, dimensions, data, and/or materials without notice. Please visit our website to view the most current information.

© 2025 LOS ANGELES LIGHTING MANUFACTURING CO. ALL RIGHTS RESERVED.

Revised: 10/1/2025



ACCESSORIES

V6

- 6" Leg Height V-Hook
- Two (2) per fixture

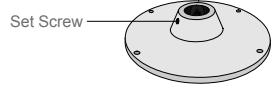


WG11-HBI609

- 11 ga. Wire Guard
- Chrome epoxy powder coated finish

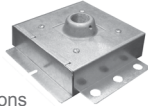
HUB

- Aluminum die cast hub with set screw for 3/4" pipe
- Safety cable included
- One (1) per fixture



SMA

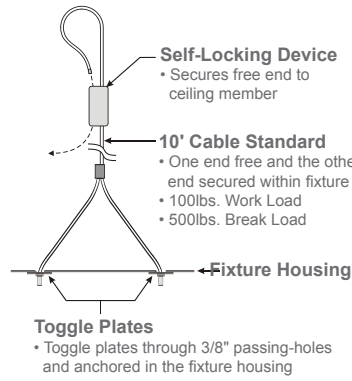
- Pendant Mounting Adapter
- 20 ga. die formed galvanized steel construction
- Die cast aluminum hub for 3/4" pipe pre-installed
- Designed for single point pendant mount applications



Note: Must request pre-punched holes from factory.

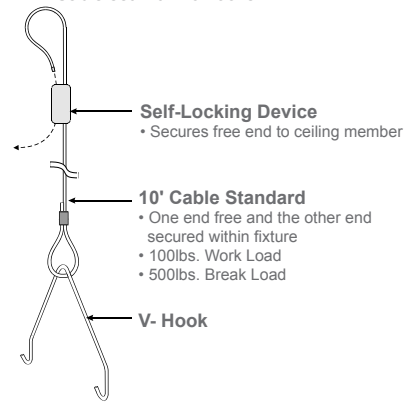
YTCS10

- Y-Toggle-End / Cable Suspension System



V6CS10

- V-Hook / Cable Suspension System
- Cable set with V6 hooks



Cable Suspension System

- See [Mechanical Options](#) for additional Cable Suspension Systems



Los Angeles Lighting Mfg. Co.
 Contact Us
 T: 626-454-8300
 F: 626-454-8399
 www.lalighting.com

10141 Olney Street
 El Monte, CA 91731
 Made in the USA



Due to continued product improvements and enhancements, Los Angeles Lighting Manufacturing Company reserves the right to alter specifications, dimensions, data, and/or materials without notice. Please visit our website to view the most current information.

© 2025 LOS ANGELES LIGHTING MANUFACTURING CO. ALL RIGHTS RESERVED.

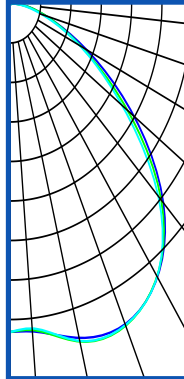
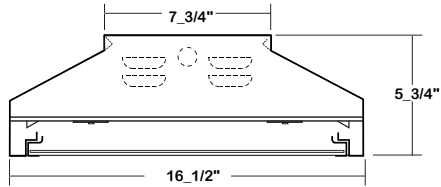
Revised: 10/1/2025



PHOTOMETRIC DATA - HBI609 SERIES

HBI609-16-4L-DRPA-DRDM-UNV-2/850HT

TEST NO.=LA-T3150-1
 LED TYPE=144 LED MODULE
 NO. OF MODULE=4
 SYSTEM WATT (W)=99.0
 CRI ≥ 80
 L70(Hrs.) ≥ 50,000
 PHOTOMETRY TYPE=C



CANDLEPOWER

ANGLE	END	45	CROSS
0	7501	7501	7501
5	7630	7652	7587
15	7585	7532	7577
25	7141	7142	7156
35	5985	5883	5752
45	3886	3659	3440
55	1837	1710	1588
65	702	665	714
75	214	291	258
85	47	39	32
90	2	1	1
95	0	0	0
115	0	0	0
125	0	0	0
135	0	0	0
145	0	0	0
155	0	0	0
165	0	0	0
175	0	0	0
180	0	0	0

ZONAL LUMEN SUMMARY

DEGREES	LUMENS	% LAMP	% FIXTURE
0-30	6177	32.8	40.5
0-40	9868	52.4	64.7
0-60	14239	75.6	93.4
0-90	15234	80.9	100.0
90-120	0.35	0.0	0.0
90-150	0.35	0.0	0.0
90-180	0.35	0.0	0.0
0-180	15234	80.9	100.00

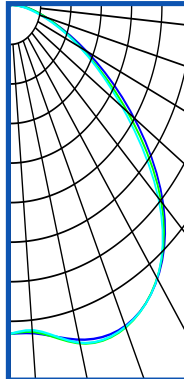
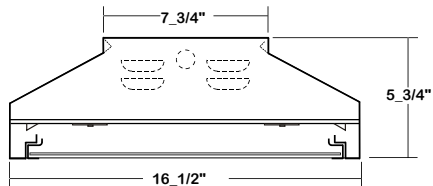
Luminaire Output= 15234 lumens
 Luminaire Efficacy = 153.8 lm/W

SPACING CRITERION

ALONG	ACROSS
1.27	1.25

HBI609-24-4L-DRPA-DRDM-UNV-2/850HT

TEST NO.=LA-T3151-1
 LED TYPE=144 LED MODULE
 NO. OF MODULE=4
 SYSTEM WATT (W)=153.1
 CRI ≥ 80
 L70(Hrs.) ≥ 50,000
 PHOTOMETRY TYPE=C



CANDLEPOWER

ANGLE	END	45	CROSS
0	11049	11049	11049
5	10943	11099	10944
15	11016	11046	10912
25	10367	10315	10306
35	8661	8517	8309
45	5601	5293	4978
55	2658	2470	2303
65	1029	958	1048
75	309	424	372
85	71	58	47
90	3	2	1
95	0	0	0
115	0	0	0
125	0	0	0
135	0	0	0
145	0	0	0
155	0	0	0
165	0	0	0
175	0	0	0
180	0	0	0

ZONAL LUMEN SUMMARY

DEGREES	LUMENS	% LAMP	% FIXTURE
0-30	8951	32.8	40.5
0-40	14292	52.4	64.8
0-60	20611	75.5	93.4
0-90	22056	80.8	100.0
90-120	0.49	0.0	0.0
90-150	0.49	0.0	0.0
90-180	0.49	0.0	0.0
0-180	22057	80.8	100.00

Luminaire Output= 22057 lumens
 Luminaire Efficacy = 144.1 lm/W

SPACING CRITERION

ALONG	ACROSS
1.25	1.23

This Space is intentionally left blank.



LOS ANGELES LIGHTING MFG. CO.

10141 OLNEY ST. / EL MONTE, CA 91731

TEL 626-454-8300 |

FAX 626-454-8399 |

www.lalighting.com