



IN-STOCK LED PRODUCT

For immediate shipment or pick up 

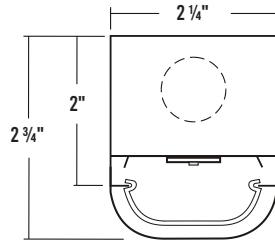


Inquiries: CUSTOMERSERVICE@LALIGHTING.COM / ORDERS: ORDERS@LALIGHTING.COM

PHONE: (626)454-8300 / FAX: (626)454-8399



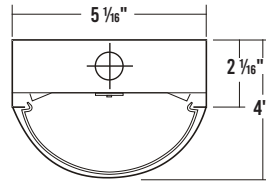
STW100
NARROW LENSED STRIP



| LENGTH | LUMENS | PART NUMBER | ITEM |
|--------|-------------------------------------|---------------------------------|--------|
| 4' | 2000 | STW100-2-4L-FRWA-DRDM-UNV-1/840 | 301400 |
| 4' | 4000 | STW100-4-4L-FRWA-DRDM-UNV-1/840 | 301500 |
| 8' | 4000 | STW100-4-8L-FRWA-DRDM-UNV-1/840 | 301600 |
| 8' | 8000 | STW100-8-8L-FRWA-DRDM-UNV-1/840 | 301700 |
| PART | ACCESSORY DESCRIPTION | | ITEM |
| V4 | 4" Leg Height V-Hook* | | 902403 |
| V4CS10 | 10' Cable w/ 4" Leg Height V-Hook | | 650195 |
| YTCS10 | 10' Y-Toggle Cable w/Locking Device | | 650190 |



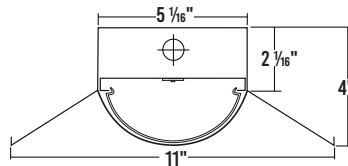
STW200
WIDE LENSED STRIP



| LENGTH | LUMENS | PART NUMBER | ITEM |
|--------|-------------------------------------|---------------------------------|--------|
| 4' | 4000 | STW200-4-4L-DRDM-UNV-1/840 | 301800 |
| 4' | 8000 | STW200-8SL-4L-DRDMS-UNV-1/8SW** | 340650 |
| 8' | 8000 | STW200-8-8L-DRDM-UNV-1/840 | 301900 |
| PART | ACCESSORY DESCRIPTION | | ITEM |
| V4 | 4" Leg Height V-Hook* | | 902403 |
| V4CS10 | 10' Cable w/ 4" Leg Height V-Hook | | 650195 |
| YTCS10 | 10' Y-Toggle Cable w/Locking Device | | 650190 |



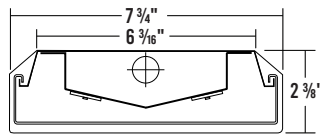
INW200
WIDE LENSED INDUSTRIAL STRIP



| LENGTH | LUMENS | PART NUMBER | ITEM |
|---------------|-------------------------------------|---------------------------------|--------|
| 4' | 4000 | INW200-4-4L-DRDM-UNV-1/840 | 300900 |
| 4' | 8000 | INW200-8SL-4L-DRDMS-UNV-1/8SW** | 340500 |
| 8' | 8000 | INW200-8-8L-DRDM-UNV-1/840 | 301000 |
| PART | ACCESSORY DESCRIPTION | | ITEM |
| V4 | 4" Leg Height V-Hook* | | 902403 |
| V4CS10 | 10' Cable w/ 4" Leg Height V-Hook | | 650195 |
| YTCS10 | 10' Y-Toggle Cable w/Locking Device | | 650190 |
| WG14-INW200-4 | 14 Gauge Wire Guard | | 685016 |



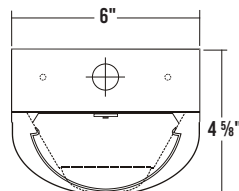
WAN107
ECONOMY WRAPAROUND



| LENGTH | LUMENS | PART NUMBER | ITEM |
|--------|-------------------------------------|-------------------------------------|--------|
| 4' | 4000 | WAN107-4-4L-FPA-DRDM-UNV-2/840 | 302100 |
| 4' | 4000 | WAN107-8SL-4L-FPA-DRDMS-UNV-2/8SW** | 340700 |
| PART | ACCESSORY DESCRIPTION | | ITEM |
| V4 | 4" Leg Height V-Hook* | | 902403 |
| V4CS10 | 10' Cable w/ 4" Leg Height V-Hook | | 650195 |
| YTCS10 | 10' Y-Toggle Cable w/Locking Device | | 650190 |



WSE251
SENSOR CONTROLLED WRAPAROUND



| LENGTH | LUMENS | PART NUMBER | ITEM |
|--------|--------|---------------------------------------|--------|
| 4' | 4000 | WSE251-4-4L-MSPCSD(LW)-DRDM-UNV-1/840 | 302000 |

* Two required per luminaire.

**8SL = 4000 lm, 6000 lm, 8000 lm
CCT = 835, 840, 850



Los Angeles Lighting Mfg. Co.

Contact Us
T: 626-454-8300 10141 Olney Street
F: 626-454-8399 El Monte, CA 91731
www.lalighting.com Made in the USA



Due to continued product improvements and enhancements, Los Angeles Lighting Manufacturing Company reserves the right to alter specifications, dimensions, data, and/or materials without notice. Please visit our website to view the most current information.

© 2026 LOS ANGELES LIGHTING MANUFACTURING CO. ALL RIGHTS RESERVED As of: 01/29/26





IN-STOCK LED PRODUCT

For immediate shipment or pick up 

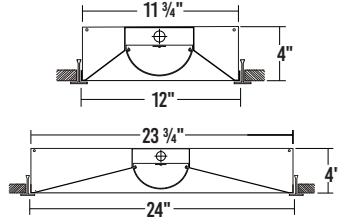


Inquiries: CUSTOMERSERVICE@LALIGHTING.COM / ORDERS: ORDERS@LALIGHTING.COM

PHONE: (626)454-8300 / FAX: (626)454-8399



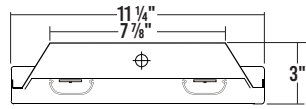
GDC310 / GDC320
CENTER LENS RECESSED T-BAR



| LENGTH | LUMENS | PART NUMBER | ITEM |
|---------|--------|---------------------------------|--------|
| 1' x 4' | 4000 | GDC310-4-4L-DRDM-UNV-1/840 | 301100 |
| 2' x 2' | 3000 | GDC320-3-2L-DRDM-UNV-1/840 | 301200 |
| 2' x 4' | 4000 | GDC320-4-4L-DRDM-UNV-1/840 | 301300 |
| 2' x 4' | 8000 | GDC320-8SL-4L-DRDMS-UNV-1/8SW** | 340300 |



HBN100
ECONOMY HIGH BAY

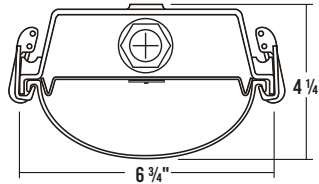


| LENGTH | LUMENS | PART NUMBER | ITEM |
|--------|--------|-----------------------------------|--------|
| 4' | 12000 | HBN100-12-4L-FRA-DRDM-UNV-2/850HT | 300600 |
| | 16000 | HBN100-16-4L-FRA-DRDM-UNV-2/850HT | 300700 |
| | 24000 | HBN100-24-4L-FRA-DRDM-UNV-2/850HT | 300800 |

For V-Hooks and Suspension Cables, contact Customer Service.



CIT200
WET LOCATION VAPOR TIGHT

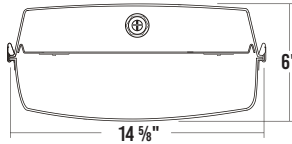


| LENGTH | LUMENS | PART NUMBER | ITEM |
|--------|--------|---|--------|
| 4' | 4000 | CIT200-4-4L-DRFA-WL-DRDM-UNV-1/840 | 300200 |
| 8' | 8000 | CIT200-8SL-4L-DRFA-WL-DRDMS-UNV-1/8SW** | 340100 |
| 8' | 8000 | CIT200-8-8L-DRFA-WL-DRDM-UNV-1/840 | 300300 |

| PART | ACCESSORY DESCRIPTION | ITEM |
|-----------|--|--------|
| CIT2/SSL4 | Stainless Steel Latches (4' Luminaire) | 686100 |
| CIT2/SSL8 | Stainless Steel Latches (8' Luminaire) | 686110 |
| CIT/SSV | Stainless Steel Chain Mount V-Hook* | 902401 |



CIT400
WET LOCATION WIDE VAPOR TIGHT

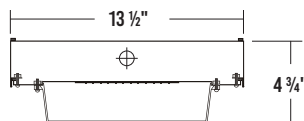


| LENGTH | LUMENS | PART NUMBER | ITEM |
|--------|--------|---------------------------------------|--------|
| 4' | 16000 | CIT400-16-4L-DRFA-WL-DRDM-UNV-2/850 | 300400 |
| 4' | 24000 | CIT400-24-4L-DRFA-WL-DRDM-UNV-2/850HT | 300500 |

| PART | ACCESSORY DESCRIPTION | ITEM |
|----------|-------------------------------------|--------|
| CIT4/SSV | Stainless Steel Chain Mount V-Hook* | 686201 |



BCL100
SECURITY CANOPY



| SIZE | LUMENS | PART NUMBER | ITEM |
|---------|--------|----------------------------|--------|
| 1' x 1' | 3000 | BCL100-3-1L-DRDM-UNV-1/840 | 300025 |
| 1' x 1' | 4000 | BCL100-4-1L-DRDM-UNV-1/840 | 300125 |

| PART | ACCESSORY DESCRIPTION | ITEM |
|------|---------------------------|--------|
| TP | Tamper Proof Screws (Set) | 670001 |

* Two required per luminaire.

**8SL = 4000 lm, 6000 lm, 8000 lm

CCT = 835, 840, 850



Los Angeles Lighting Mfg. Co.

Contact Us
T: 626-454-8300 10141 Olney Street
F: 626-454-8399 El Monte, CA 91731
www.lalighting.com Made in the USA



Due to continued product improvements and enhancements, Los Angeles Lighting Manufacturing Company reserves the right to alter specifications, dimensions, data, and/or materials without notice. Please visit our website to view the most current information.

© 2026 LOS ANGELES LIGHTING MANUFACTURING CO. ALL RIGHTS RESERVED As of: 01/29/26

